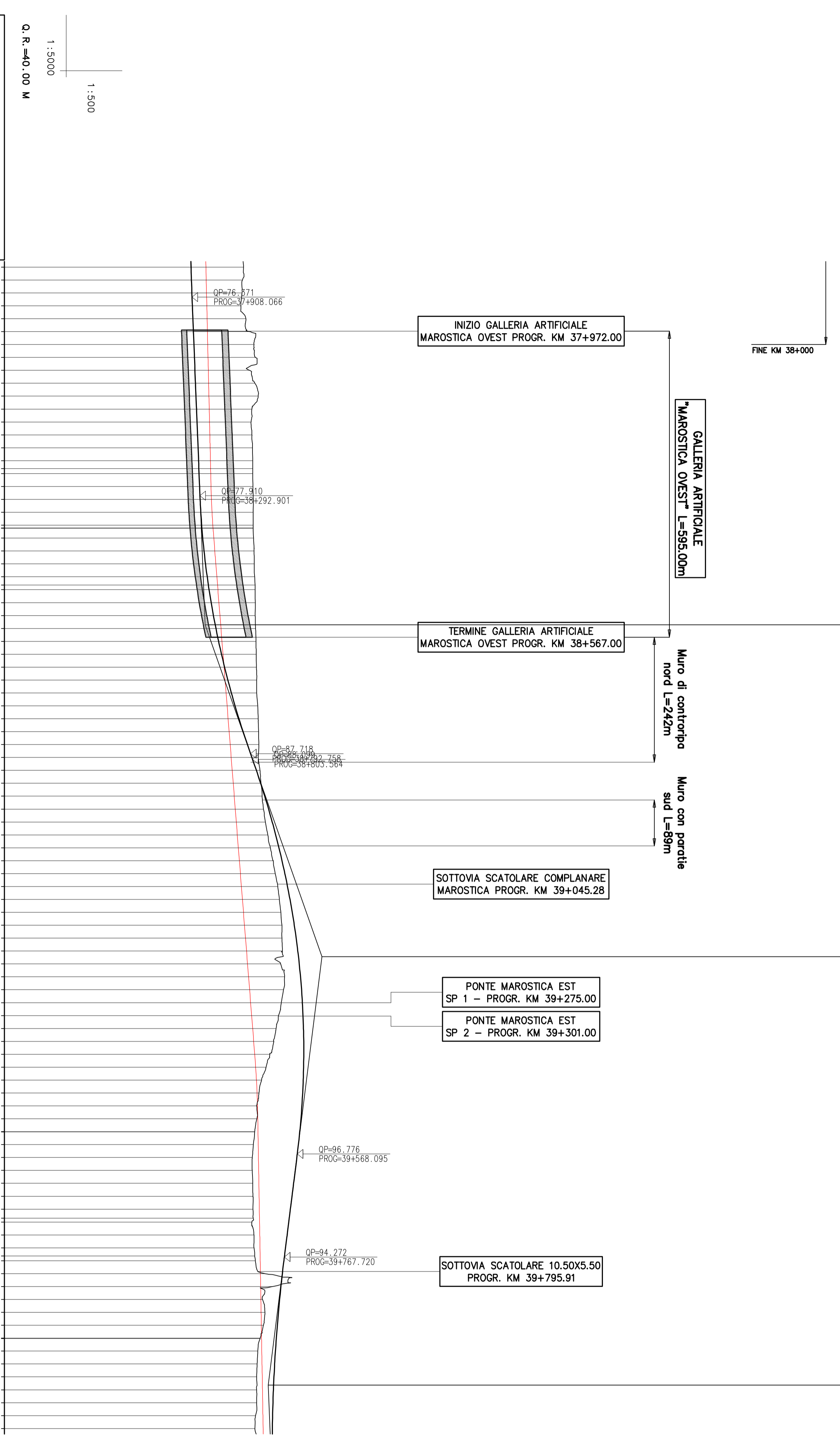
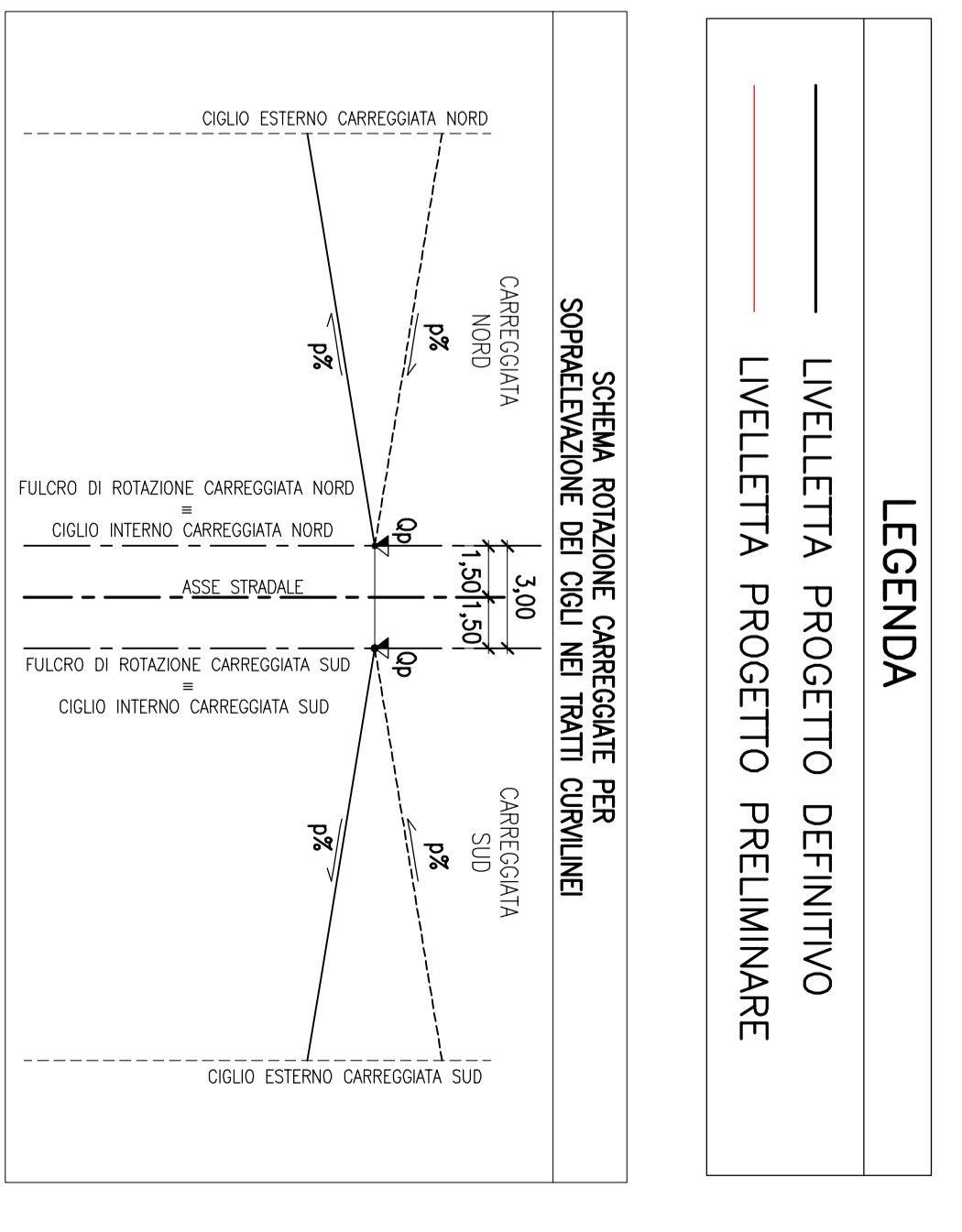


PROVINCIA	VICENZA
COMUNE	PIANETZZE
LIVELLETTE	L = 795.00 DISL = 3.92 p = 0.004000
PROGR. LIVELLETTE	38+542.829
	643.00
	22.66
	0.035241
	39+185.829
	830.00
	-10.41
	-0.012542
	40+015.829
	NOVE

33	PR = 385474.83 DP = 0.031 R = 16000.00 E = 249.93 F = 1.95
34	PR = 391889.83 DP = 0.048 R = 16000.00 E = 382.27 F = 4.57
35	PR = 40015.83 DP = 0.019 R = 30000.00 E = 248.11 F = 1.03



NUMERO SEZIONE	QUOTE PROGETTO	QUOTE TERRENO	ETTOMETRICHE	DIST. PARZIALI	PROGRESSIVE	ANDAMENTO PLANIMETRICO	ALLARGAMENTO CIGLI	ANDAMENTO CIGLI
601	76.195	76.195	86.354		37+850.00			
602	76.257	76.257	86.138		37+875.00			
603	76.340	76.340	86.056		37+900.00			
604	76.439	76.439	85.853		37+925.00			
605	76.539	76.539	86.810		37+950.00			
606	76.639	76.639	87.587		37+975.00			
607	76.739	76.739	88.379		38+000.00			
608	76.839	76.839	88.693		38+025.00			
609	76.939	76.939	87.502		38+050.00			
610	77.039	77.039	88.575		38+075.00			
611	77.139	77.139	89.201		38+100.00			
612	77.239	77.239	87.970		38+125.00			
613	77.339	77.339	87.815		38+150.00			
614	77.439	77.439	87.988		38+175.00			
615	77.539	77.539	88.097		38+200.00			
616	77.639	77.639	88.139		38+225.00			
618	77.739	77.739	88.152		38+250.00			
619	77.839	77.839	88.187		38+275.00			
620	77.940	77.940	88.250		38+300.00			
621	78.071	78.071	88.232		38+325.00			
622	78.241	78.241	88.216		38+350.00			
625	78.449	78.449	88.303		38+375.00			
626	78.697	78.697	88.400		38+400.00			
627	78.984	78.984	88.444		38+425.00			
628	79.310	79.310	88.500		38+450.00			
630	79.675	79.675	88.592		38+475.00			
631	80.079	80.079	88.634		38+500.00			
632	80.522	80.522	88.613		38+525.00			
633	81.004	81.004	88.698		38+550.00			
634	81.526	81.526	88.769		38+575.00			
635	82.086	82.086	88.814		38+600.00			
636	82.685	82.685	88.867		38+625.00			
637	83.324	83.324	88.909		38+650.00			
638	84.001	84.001	88.882		38+675.00			
639	84.718	84.718	89.128		38+700.00			
640	85.473	85.473	89.202		38+725.00			
641	86.268	86.268	89.274		38+750.00			
642	87.102	87.102	89.310		38+775.00			
643	87.973	87.973	89.207		38+800.00			
644	88.840	88.840	89.554		38+825.00			
645	89.668	89.668	89.758		38+850.00			
646	90.457	90.457	89.972		38+875.00			
647	91.206	91.206	90.226		38+900.00			
648	91.917	91.917	90.591		38+925.00			
649	92.589	92.589	91.062		38+950.00			
650	93.222	93.222	91.547		38+975.00			
651	93.815	93.815	92.102		39+000.00			
652	94.370	94.370	92.510		39+025.00			
653	94.885	94.885	92.990		39+050.00			
654	95.362	95.362	93.305		39+075.00			
655	95.799	95.799	93.580		39+100.00			
656	96.198	96.198	93.803		39+125.00			
657	96.557	96.557	93.791		39+150.00			
658	96.877	96.877	93.890		39+175.00			
659	97.158	97.158	93.572		39+200.00			
660	97.400	97.400	94.301		39+225.00			
661	97.603	97.603	94.115		39+250.00			
662	97.767	97.767	93.681		39+275.00			
663	97.892	97.892	93.139		39+300.00			
664	97.978	97.978	92.670		39+325.00			
665	98.025	98.025	92.220		39+350.00			
666	98.032	98.032	91.460		39+375.00			
667	98.001	98.001	90.729		39+400.00			
668	97.930	97.930	89.851		39+425.00			
669	97.821	97.821	89.357		39+450.00			
670	97.672	97.672	88.868		39+475.00			
671	97.485	97.485	88.930		39+500.00			
672	97.257	97.257	88.544		39+525.00			
673	96.992	96.992	88.247		39+550.00			
674	96.689	96.689	88.052		39+575.00			
675	96.375	96.375	88.035		39+600.00			
676	96.062	96.062	88.144		39+625.00			
677	95.748	95.748	88.192		39+650.00			
678	95.435	95.435	88.199		39+675.00			
679	95.121	95.121	87.959		39+700.00			
682	94.808	94.808	88.371		39+725.00			
683	94.494	94.494	88.388		39+750.00			
685	94.181	94.181	88.664		39+775.00			
686	93.884	93.884	90.517		39+800.00			
687	93.608	93.608	91.886		39+825.00			
688	93.353	93.353	90.023		39+850.00			
689	93.118	93.118	90.488		39+875.00			
690	92.904	92.904	91.217		39+900.00			
691	92.707	92.707	91.444		39+925.00			
692	92.539	92.539	91.124		39+950.00			
693	92.388	92.388	89.001		39+975.00			
694	92.258	92.258	89.907		40+000.00			
695	92.148	92.148	89.892		40+025.00			
696	92.059	92.059	89.898		40+050.00			
698	91.992	91.992	89.944		40+075.00			
699	91.944	91.944	89.960		40+100.00			



COMMISSARIO DELEGATO PER L'EMERGENZA
DETERMINATASI NEL SETTORE DEL TRAFFICO E DELLA MOBILITÀ NEL
TERRITORIO DELLE PROVINCE DI TREVISO E VICENZA

**SUPERSTRADA A PEDAGGIO
PEDEMONTANA VENETA**

ATI CONCESSIONARIA: S.S. SpA, SACVY, INFRASTRUTTURE S.p.A.

RESPONSABILE PROGETTAZIONE: ING. GIUSEPPE PASIOL

COORDINATORE PER LA SICUREZZA IN FASE DI PROGETTAZIONE: ING. SANDRO DOGLIANI

PROGETTO DEFINITIVO (CUP: H51B0300050009)

PROGETTO DELL'INFRASTRUTTURA PROFILO LONGITUDINALE ASSE SUD

TAV. 20 di 45 - DA PK 37+850 A PK 40+100

REV.	DESCRIZIONE	REDAITTO	DATA	VERIFICATO	DATA	APPROVATO	DATA
0	PRIMA EMISSIONE	CCI	28/12/2009	IGO	30/12/2009	SIS	04/01/2010

IL RESPONSABILE DEL PROCEDIMENTO: ING. GIUSEPPE PASIOL

IL COMMISSARIO: ING. SILVANO VERNIZZI

PROTOCOLLO: DEL.