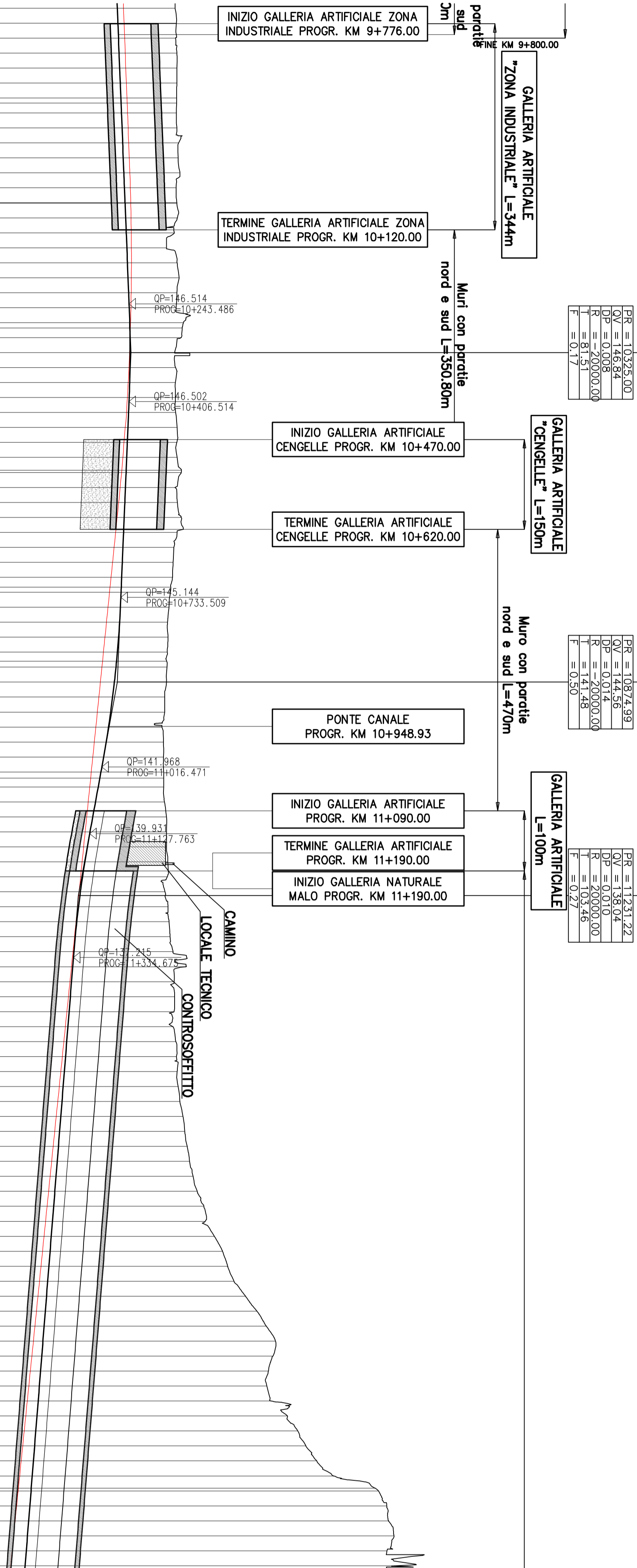
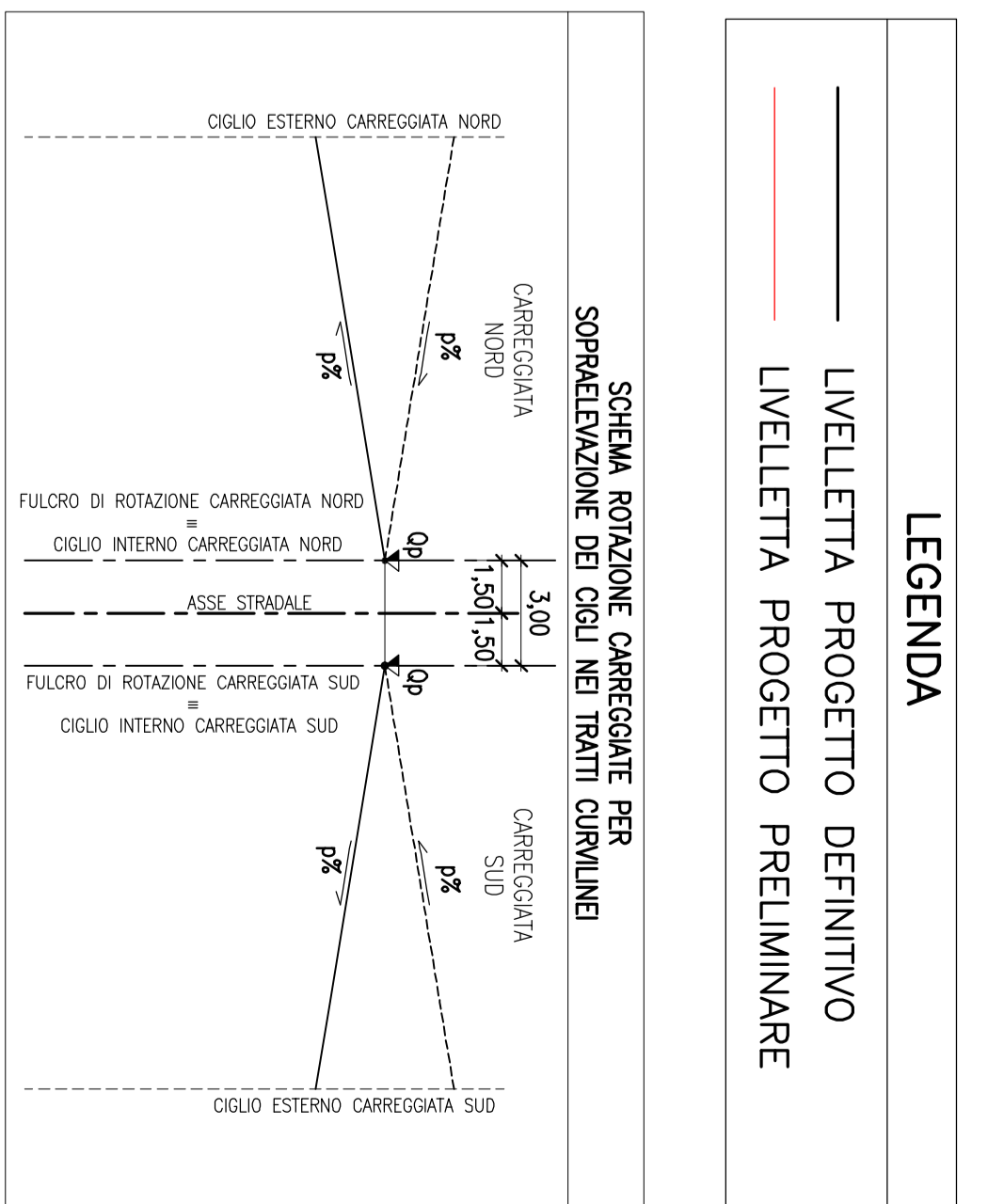


PROVINCIA	CASTELGOMBERTO	COMUNE	CASTELGOMBERTO	COMUNE	CASTELGOMBERTO	PROVINCIA	VICENZA	COMUNE	CASTELGOMBERTO	COMUNE	CASTELGOMBERTO	PROVINCIA	CORNEDO VICENTINO
LIVELLETTA	L = 2,00 DIST = 64 P = 4000	LIVELLETTA	L = 549,99 DIST = -2,28 P = -0,004151	LIVELLETTA	L = 356,23 DIST = -6,52 P = -0,018299	LIVELLETTA	L = 1142,31 DIST = 219 P = 1142,31	LIVELLETTA	L = 104325,000 DIST = 104874,990 P = 104325,000	LIVELLETTA	L = 104325,000 DIST = 104874,990 P = 104325,000	LIVELLETTA	L = 104325,000 DIST = 104874,990 P = 104325,000



NUMERO SEZIONE	QUOTE PROGETTO	QUOTE TERRENO	ETIMOMETRICHE	DIST. PARZIALI	PROGRESSIVE	ANDAMENTO PLANIMETRICO	ALLARGAMENTO CIGLI	ANDAMENTO CIGLI
424	144.540	154.210	9+800	25.00	9+750.00		SX	
425	144.640	154.426	9+800	25.00	9+775.00		SX	
426	144.740	154.296	9+800	25.00	9+800.00		SX	
427	144.840	154.508	9+800	25.00	9+825.00		SX	
428	144.940	154.516	9+800	25.00	9+850.00		SX	
429	145.040	154.497	9+800	25.00	9+875.00		SX	
430	145.140	154.505	9+800	25.00	9+900.00		SX	
431	145.240	154.419	9+800	25.00	9+925.00		SX	
432	145.340	154.497	9+800	25.00	9+950.00		SX	
433	145.440	154.793	9+800	25.00	9+975.00		SX	
434	145.540	154.693	9+800	25.00	10+000.00		SX	
435	145.640	154.996	9+800	25.00	10+025.00		SX	
436	145.740	154.365	9+800	25.00	10+050.00		SX	
437	145.840	154.493	9+800	25.00	10+075.00		SX	
438	145.940	154.497	9+800	25.00	10+100.00		SX	
439	146.040	154.567	9+800	25.00	10+125.00		SX	
440	146.140	154.062	9+800	25.00	10+150.00		SX	
441	146.240	152.766	9+800	25.00	10+175.00		SX	
442	146.340	154.535	9+800	25.00	10+200.00		SX	
443	146.440	154.896	9+800	25.00	10+225.00		SX	
444	146.540	154.502	9+800	25.00	10+250.00		SX	
445	146.640	154.502	9+800	25.00	10+275.00		SX	
446	146.740	154.388	9+800	25.00	10+300.00		SX	
447	146.840	155.059	9+800	25.00	10+325.00		SX	
448	146.940	154.999	9+800	25.00	10+350.00		SX	
449	147.040	154.999	9+800	25.00	10+375.00		SX	
450	147.140	154.282	9+800	25.00	10+400.00		SX	
451	147.240	154.265	9+800	25.00	10+425.00		SX	
452	147.340	154.246	9+800	25.00	10+450.00		SX	
453	147.440	154.292	9+800	25.00	10+475.00		SX	
454	147.540	154.482	9+800	25.00	10+500.00		SX	
455	147.640	154.530	9+800	25.00	10+525.00		SX	
456	147.740	154.482	9+800	25.00	10+550.00		SX	
457	147.840	154.528	9+800	25.00	10+575.00		SX	
458	147.940	155.220	9+800	25.00	10+600.00		SX	
459	148.040	154.150	9+800	25.00	10+625.00		SX	
460	148.140	154.565	9+800	25.00	10+650.00		SX	
461	148.240	155.229	9+800	25.00	10+675.00		SX	
462	148.340	154.543	9+800	25.00	10+700.00		SX	
463	148.440	154.004	9+800	25.00	10+725.00		SX	
464	148.540	153.867	9+800	25.00	10+750.00		SX	
465	148.640	153.759	9+800	25.00	10+775.00		SX	
466	148.740	153.417	9+800	25.00	10+800.00		SX	
467	148.840	153.165	9+800	25.00	10+825.00		SX	
468	148.940	152.939	9+800	25.00	10+850.00		SX	
469	149.040	153.000	9+800	25.00	10+875.00		SX	
470	149.140	152.910	9+800	25.00	10+900.00		SX	
471	149.240	152.838	9+800	25.00	10+925.00		SX	
472	149.340	152.765	9+800	25.00	10+950.00		SX	
473	149.440	152.464	9+800	25.00	10+975.00		SX	
474	149.540	152.459	9+800	25.00	11+000.00		SX	
475	149.640	152.001	9+800	25.00	11+025.00		SX	
476	149.740	152.269	9+800	25.00	11+050.00		SX	
477	149.840	152.258	9+800	25.00	11+075.00		SX	
478	149.940	152.279	9+800	25.00	11+100.00		SX	
479	150.040	152.277	9+800	25.00	11+125.00		SX	
480	150.140	152.426	9+800	25.00	11+150.00		SX	
481	150.240	152.758	9+800	25.00	11+175.00		SX	
482	150.340	152.749	9+800	25.00	11+200.00		SX	
483	150.440	152.747	9+800	25.00	11+225.00		SX	
484	150.540	152.747	9+800	25.00	11+250.00		SX	
485	150.640	152.979	9+800	25.00	11+275.00		SX	
486	150.740	152.905	9+800	25.00	11+300.00		SX	
487	150.840	152.512	9+800	25.00	11+325.00		SX	
488	150.940	153.009	9+800	25.00	11+350.00		SX	
489	151.040	153.186	9+800	25.00	11+375.00		SX	
490	151.140	153.367	9+800	25.00	11+400.00		SX	
491	151.240	153.849	9+800	25.00	11+425.00		SX	
492	151.340	156.017	9+800	25.00	11+450.00		SX	
493	151.440	154.048	9+800	25.00	11+475.00		SX	
494	151.540	154.117	9+800	25.00	11+500.00		SX	
495	151.640	154.017	9+800	25.00	11+525.00		SX	
496	151.740	153.822	9+800	25.00	11+550.00		SX	
497	151.840	154.331	9+800	25.00	11+575.00		SX	
498	151.940	154.407	9+800	25.00	11+600.00		SX	
499	152.040	154.559	9+800	25.00	11+625.00		SX	
500	152.140	154.706	9+800	25.00	11+650.00		SX	
501	152.240	154.994	9+800	25.00	11+675.00		SX	
502	152.340	155.528	9+800	25.00	11+700.00		SX	
503	152.440	155.828	9+800	25.00	11+725.00		SX	
504	152.540	156.214	9+800	25.00	11+750.00		SX	
505	152.640	156.634	9+800	25.00	11+775.00		SX	
506	152.740	157.196	9+800	25.00	11+800.00		SX	
507	152.840	157.904	9+800	25.00	11+825.00		SX	
508	152.940	159.007	9+800	25.00	11+850.00		SX	
509	153.040	159.224	9+800	25.00	11+875.00		SX	
510	153.140	160.760	9+800	25.00	11+900.00		SX	
511	153.240	162.136	9+800	25.00	11+925.00		SX	
512	153.340	162.985	9+800	25.00	11+950.00		SX	
513	153.440	164.039	9+800	25.00	11+975.00		SX	
514	153.540	165.951	9+800	25.00	12+000.00		SX	
515	153.640	167.873	9+800	25.00	12+025.00		SX	
516	153.740	169.428	9+800	25.00	12+050.00		SX	
517	153.840	170.971	9+800	25.00	12+075.00		SX	
518	153.940	170.548	9+800	25.00	12+100.00		SX	
519	154.040	169.778	9+800	25.00	12+125.00		SX	
520	154.140	169.545	9+800	25.00	12+150.00		SX	
521	154.240	170.240	9+800	25.00	12+175.00		SX	
522	154.340	172.960	9+800	25.00	12+200.00		SX	
523	154.440	174.707	9+800	25.00	12+225.00		SX	
524	154.540	176.052	9+800	25.00	12+250.00		SX	
525	154.640	177.870	9+800	25.00	12+275.00		SX	
526	154.740	180.713	9+800	25.00	12+300.00		SX	
527	154.840	188.182	9+800	25.00	12+325.00		SX	
528	154.940	189.563	9+800	25.00	12+350.00		SX	
529	155.040	189.866	9+800	25.00	12+375.00		SX	
530	155.140	190.772	9+800	25.00	12+400.00		SX	
531	155.240	189.612	9+800	25.00	12+425.00		SX	
532	155.340	189.944	9+800	25.00	12+450.00		SX	



COMMISSARIO DELEGATO PER L'EMERGENZA
DETERMINATASI NEL SETTORE DEL TRAFFICO E DELLA MOBILITÀ NEL TERRITORIO DELLE PROVINCE DI TREVISO E VICENZA

SUPERSTRADA A PEDAGGIO PEDEMONDANTANA VENETA

ATI CONCESSORARIA: SIS SpA, SACIV, INRASTRUTTURAS S.p.A.

COORDINATORE PER LA SICUREZZA IN FASE DI PROGETTAZIONE: **ORDINE DEGLI INGEGNERI DELLA PROVINCIA DI CINQUE** 1211 Dott. Ing. Claudio Dogliani

PROGETTO DEFINITIVO (CUP H51030005000000)

TITOLO ELABORATO: **PROGETTO DELL'INFRASTRUTTURA PROFILO LONGITUDINALE ASSE SUD** Tav. 7 di 45 - DA PK 9+750 A PK 12+350

REVISIONI: 0

IL RESPONSABILE DEL PROCEDIMENTO: Ing. Giuseppe FASOLI

IL COMMISSARIO: Ing. Sirovano VERNIZZI

SCALA: 1:5000/1:500