

PROVINCIA	MASON VICENTINO	VICENZA	PIANEZZE
COMUNE			
LIVELLETTA	L = 500,00 DISL = 8,00 P = 0,016000	850,00 -11,71 -0,013771	487,83 -1,96 -0,004016
PROGR. LIVELLETTA	35+950,000	36+450,000	37+300,000
			37+787,829

PR = 35350,00
OP = 0,00
R = 16000,00
E = 0,80

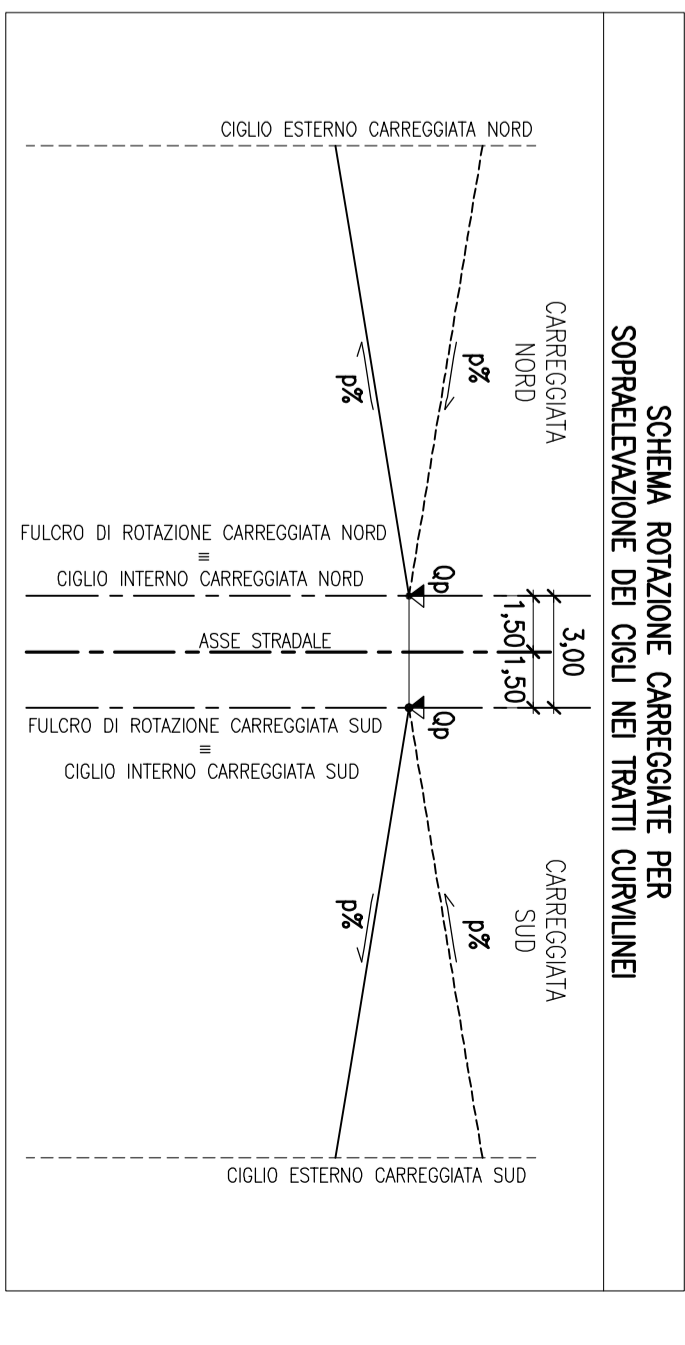
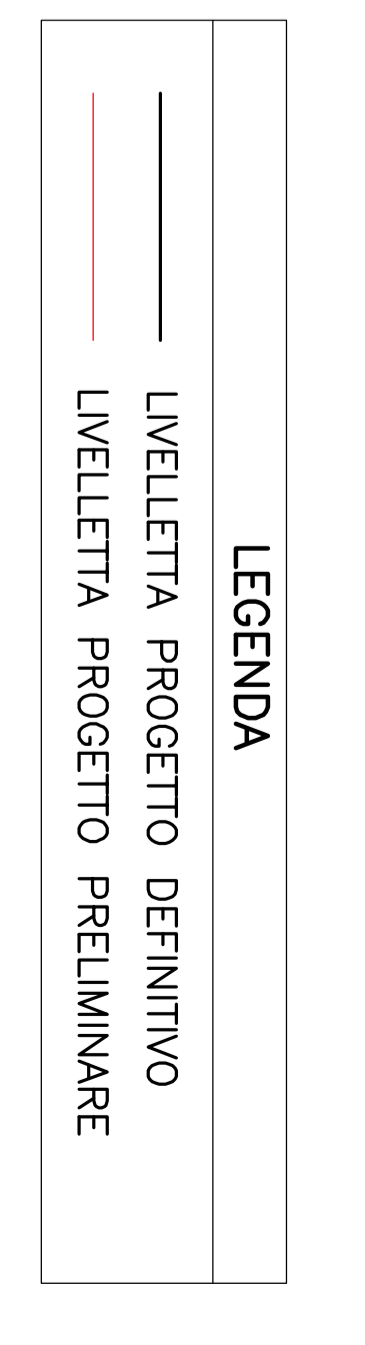
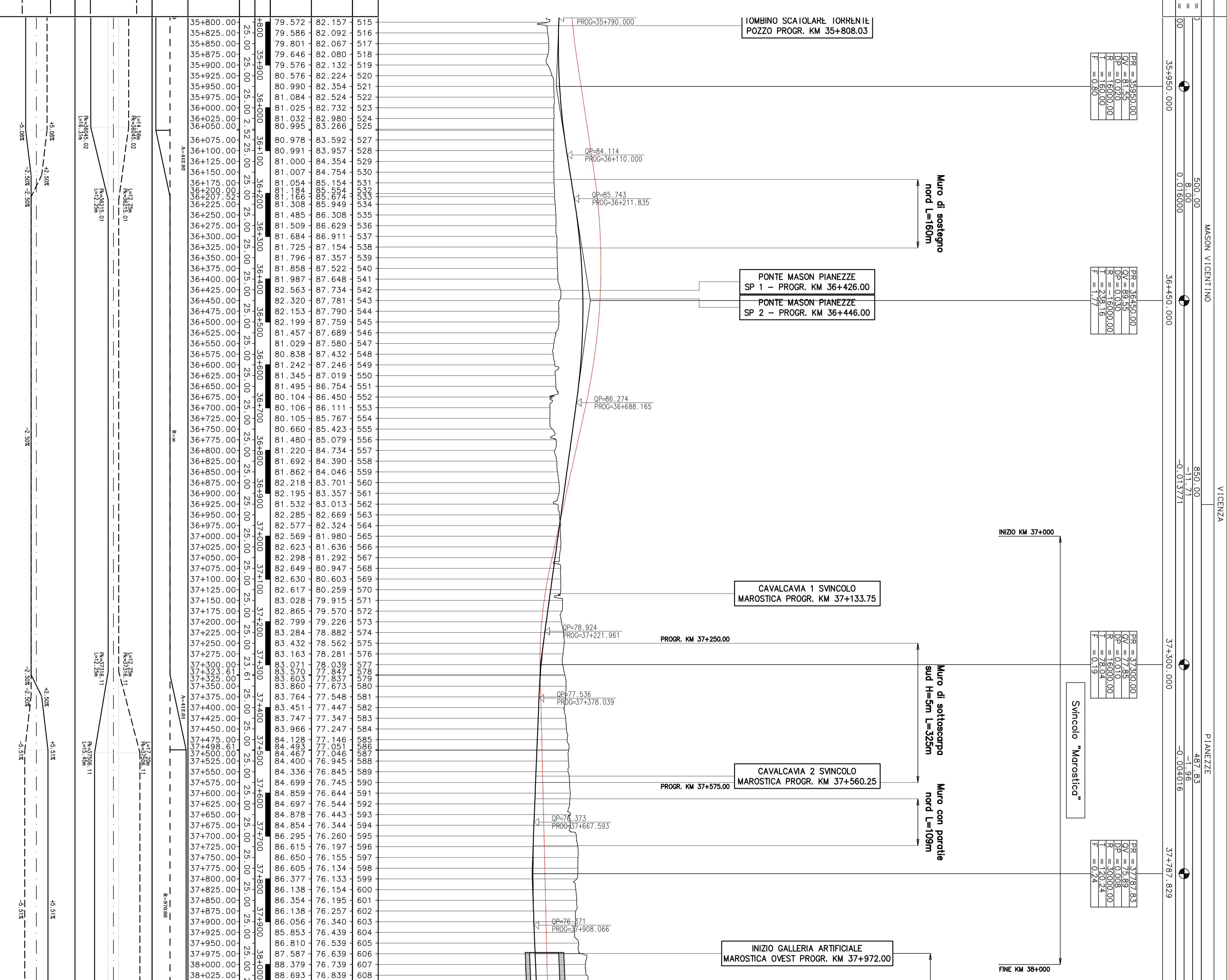
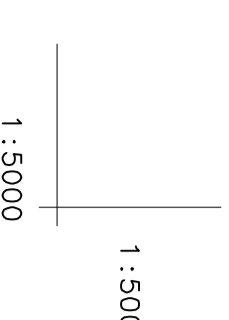
PR = 36450,00
OP = 0,00
R = -16000,00
E = 238,16

PR = 37300,00
OP = 0,00
R = 16000,00
E = 78,04

PR = 37787,83
OP = 0,00
R = 30000,00
E = 120,24

NUMERO SEZIONE	QUOTE PROGETTO	QUOTE TERRENO	ETOMETRICHE	DIST. PARZIALI	PROGRESSIVE	ANDAMENTO PLANIMETRICO	ALLARGAMENTO CIGLI	ANDAMENTO CIGLI
515	82.157	82.157	79.572		35+800.00			SX
516	82.092	82.092	79.586		35+825.00			SX
517	82.067	82.067	79.801		35+850.00			SX
518	82.080	82.080	79.646		35+875.00			SX
519	82.132	82.132	79.576		35+900.00			SX
520	82.224	82.224	80.576		35+925.00			SX
521	82.354	82.354	80.990		35+950.00			SX
522	82.524	82.524	81.084		35+975.00			SX
523	82.732	82.732	81.025		36+000.00			SX
524	82.980	82.980	81.032		36+025.00			SX
525	83.266	83.266	80.995		36+050.00			SX
527	83.592	83.592	80.978		36+075.00			SX
528	83.957	83.957	80.991		36+100.00			SX
529	84.354	84.354	81.000		36+125.00			SX
530	84.754	84.754	81.007		36+150.00			SX
531	85.031	85.031	81.054		36+175.00			SX
532	85.374	85.374	81.056		36+200.00			SX
534	85.949	85.949	81.063		36+225.00			SX
535	86.308	86.308	81.485		36+250.00			SX
536	86.629	86.629	81.509		36+275.00			SX
537	86.911	86.911	81.684		36+300.00			SX
538	87.154	87.154	81.725		36+325.00			SX
539	87.357	87.357	81.796		36+350.00			SX
540	87.522	87.522	81.858		36+375.00			SX
541	87.648	87.648	81.987		36+400.00			SX
542	87.734	87.734	82.563		36+425.00			SX
543	87.781	87.781	82.320		36+450.00			SX
544	87.790	87.790	82.153		36+475.00			SX
545	87.759	87.759	82.199		36+500.00			SX
546	87.689	87.689	81.457		36+525.00			SX
547	87.580	87.580	81.029		36+550.00			SX
548	87.432	87.432	80.838		36+575.00			SX
549	87.246	87.246	81.242		36+600.00			SX
550	87.019	87.019	81.345		36+625.00			SX
551	86.754	86.754	81.495		36+650.00			SX
552	86.450	86.450	80.104		36+675.00			SX
553	86.111	86.111	80.106		36+700.00			SX
554	85.767	85.767	80.105		36+725.00			SX
555	85.423	85.423	80.660		36+750.00			SX
556	85.079	85.079	81.480		36+775.00			SX
557	84.734	84.734	81.220		36+800.00			SX
558	84.390	84.390	81.692		36+825.00			SX
559	84.046	84.046	81.862		36+850.00			SX
560	83.701	83.701	82.218		36+875.00			SX
561	83.357	83.357	82.195		36+900.00			SX
562	83.013	83.013	81.532		36+925.00			SX
563	82.669	82.669	82.285		36+950.00			SX
564	82.324	82.324	82.577		36+975.00			SX
565	81.980	81.980	82.569		37+000.00			SX
566	81.636	81.636	82.623		37+025.00			SX
567	81.292	81.292	82.298		37+050.00			SX
568	80.947	80.947	82.649		37+075.00			SX
569	80.603	80.603	82.630		37+100.00			SX
570	80.259	80.259	82.617		37+125.00			SX
571	79.915	79.915	83.028		37+150.00			SX
572	79.570	79.570	82.865		37+175.00			SX
573	79.226	79.226	82.799		37+200.00			SX
574	78.882	78.882	83.284		37+225.00			SX
575	78.562	78.562	83.432		37+250.00			SX
576	78.281	78.281	83.163		37+275.00			SX
577	78.039	78.039	83.071		37+300.00			SX
578	77.847	77.847	83.570		37+325.00			SX
579	77.837	77.837	83.603		37+350.00			SX
580	77.673	77.673	83.860		37+375.00			SX
581	77.548	77.548	83.764		37+400.00			SX
582	77.447	77.447	83.451		37+425.00			SX
583	77.347	77.347	83.747		37+450.00			SX
584	77.247	77.247	83.966		37+475.00			SX
585	77.146	77.146	84.128		37+500.00			SX
586	77.051	77.051	84.463		37+525.00			SX
587	76.955	76.955	84.497		37+550.00			SX
588	76.945	76.945	84.400		37+575.00			SX
589	76.845	76.845	84.336		37+600.00			SX
590	76.745	76.745	84.699		37+625.00			SX
591	76.644	76.644	84.859		37+650.00			SX
592	76.544	76.544	84.697		37+675.00			SX
593	76.443	76.443	84.878		37+700.00			SX
594	76.344	76.344	84.854		37+725.00			SX
595	76.260	76.260	86.295		37+750.00			SX
596	76.197	76.197	86.615		37+775.00			SX
597	76.155	76.155	86.650		37+800.00			SX
598	76.134	76.134	86.605		37+825.00			SX
599	76.133	76.133	86.377		37+850.00			SX
600	76.154	76.154	86.138		37+875.00			SX
601	76.195	76.195	86.354		37+900.00			SX
602	76.257	76.257	86.138		37+925.00			SX
603	76.340	76.340	86.056		37+950.00			SX
604	76.439	76.439	85.853		37+975.00			SX
605	76.539	76.539	86.810		38+000.00			SX
606	76.639	76.639	87.587		38+025.00			SX
607	76.739	76.739	88.379		38+050.00			SX
608	76.839	76.839	88.693					SX
609	76.939	76.939	87.502					SX

Q. R. = 40,00 M



COMMISSARIO DELEGATO PER L'EMERGENZA
DETERMINATASI NEL SETTORE DEL TRAFFICO E DELLA MOBILITÀ NEL
TERRITORIO DELLE PROVINCE DI TREVISO E VICENZA

SUPERSTRADA A PEDAGGIO
PEDEMONTANA VENETA

ATI CONCESSIONARIA: **SIS SpA**, **SACVY**, **INFRASTRUTTURE S.p.A.**

RESPONSABILE PROGETTAZIONE: **ORDINE DEGLI INGEGNERI DELLA PROVINCIA DI CINQUE**

COORDINATORE PER LA SICUREZZA IN FASE DI PROGETTAZIONE: **ING. GIUSEPPE FASOLI**

TITOLO ELABORATO: **PROGETTO DEFINITIVO**

PROGETTO DELL'INFRASTRUTTURA PROFILONGITUDINALE ASSE NORD

Tab. 19 di 45 - DA PK. 35+800 A PK. 38+050

IL RESPONSABILE DEL PROCEDIMENTO: **Ing. Giuseppe Fasoli**

IL COMMISSARIO: **Ing. Saverio VERNIZZI**

SCALA: 1:5000/1:500