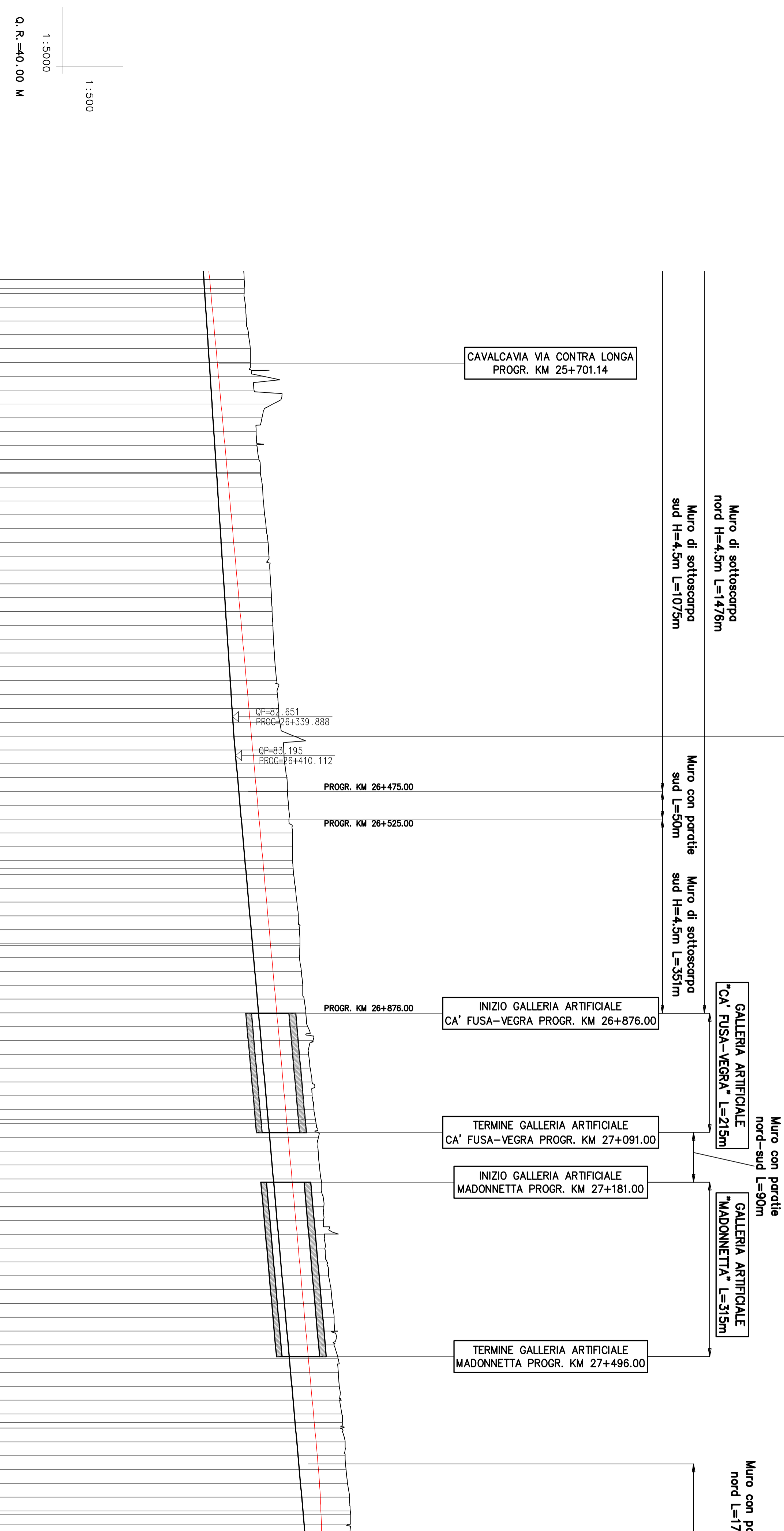
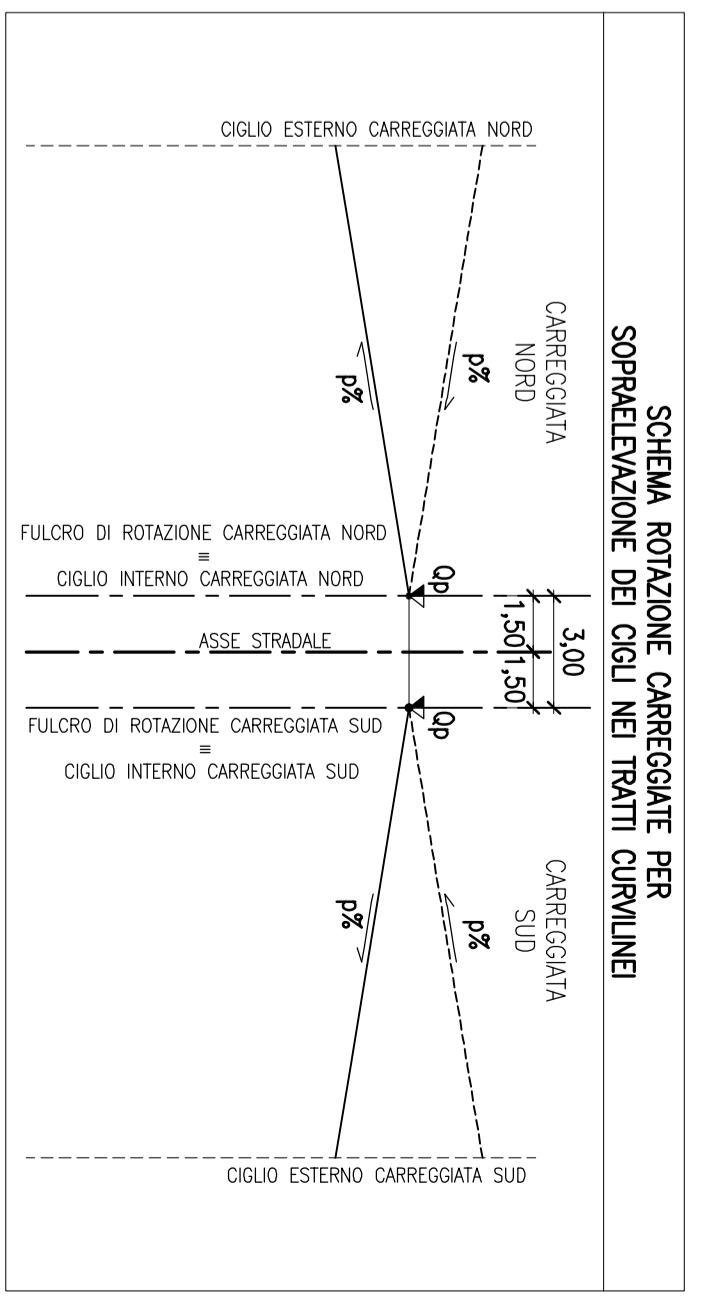
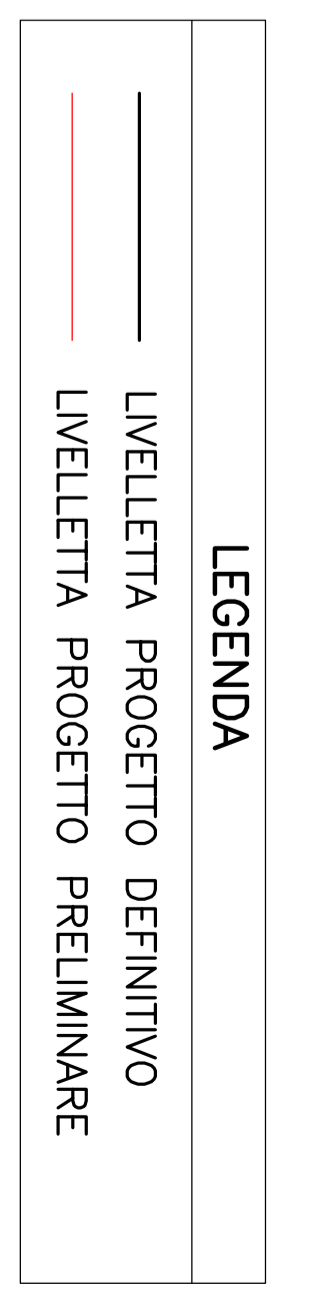


PROVINCIA	VICENZA		
COMUNE	MONTECCHIO PREGALICINO		
LIVELLETTE	L = 1094,09	7-20	2000-14
PROGR. LIVELLETTE	P = 0,0065833	26+375,000	17-85
			0,008924

PR	=	2637,500
OP	=	0,000
R	=	30000,000
F	=	35,11
E	=	0,02



NUMERO SEZIONE	QUOTE PROGETTO	QUOTE TERRENO	ETTOMETRICHE	DIST. PARZIALI	PROGRESSIVE	ANDAMENTO PLANIMETRICO	ANDAMENTO CICLI	ANDAMENTO CIGLI
82	77.451	84.753	25+500	18.92	25+550.00	D	SX	DX
84	77.615	84.739	25+575.00		25+575.00			
85	77.780	85.001	25+600.00		25+600.00			
86	77.945	85.263	25+625.00		25+625.00			
87	78.110	85.525	25+650.00		25+650.00			
88	78.274	85.787	25+675.00		25+675.00			
89	78.438	85.836	25+700.00		25+700.00			
90	78.603	86.207	25+725.00		25+725.00			
91	78.767	86.538	25+750.00		25+750.00			
92	78.932	86.946	25+775.00		25+775.00			
93	79.097	87.975	25+800.00		25+800.00			
94	79.261	86.911	25+825.00		25+825.00			
95	79.426	87.048	25+850.00		25+850.00			
96	79.590	87.407	25+875.00		25+875.00			
97	79.755	87.963	25+900.00		25+900.00			
98	79.919	88.053	25+925.00		25+925.00			
99	80.084	88.213	25+950.00		25+950.00			
100	80.249	88.453	25+975.00		25+975.00			
101	80.413	88.746	26+000.00		26+000.00			
102	80.578	89.051	26+025.00		26+025.00			
103	80.742	89.222	26+050.00		26+050.00			
104	80.907	89.388	26+075.00		26+075.00			
105	81.071	89.545	26+100.00		26+100.00			
106	81.236	89.681	26+125.00		26+125.00			
107	81.401	89.805	26+150.00		26+150.00			
108	81.565	89.928	26+175.00		26+175.00			
109	81.730	90.037	26+200.00		26+200.00			
110	81.894	90.192	26+225.00		26+225.00			
111	82.059	90.371	26+250.00		26+250.00			
112	82.223	90.616	26+275.00		26+275.00			
113	82.388	90.769	26+300.00		26+300.00			
114	82.553	90.985	26+325.00		26+325.00			
115	82.719	91.183	26+350.00		26+350.00			
116	82.902	93.767	26+375.00		26+375.00			
117	83.107	91.901	26+400.00		26+400.00			
118	83.328	92.086	26+425.00		26+425.00			
119	83.551	92.481	26+450.00		26+450.00			
120	83.774	92.565	26+475.00		26+475.00			
121	83.997	92.779	26+500.00		26+500.00			
122	84.220	92.845	26+525.00		26+525.00			
123	84.443	93.456	26+550.00		26+550.00			
124	84.666	93.461	26+575.00		26+575.00			
125	84.890	93.505	26+600.00		26+600.00			
126	85.113	93.690	26+625.00		26+625.00			
127	85.336	94.000	26+650.00		26+650.00			
128	85.559	94.271	26+675.00		26+675.00			
129	85.782	94.539	26+700.00		26+700.00			
130	86.005	94.733	26+725.00		26+725.00			
131	86.228	94.827	26+750.00		26+750.00			
132	86.451	94.750	26+775.00		26+775.00			
133	86.674	95.073	26+800.00		26+800.00			
134	86.897	95.315	26+825.00		26+825.00			
135	87.121	95.572	26+850.00		26+850.00			
136	87.344	95.900	26+875.00		26+875.00			
137	87.567	96.240	26+900.00		26+900.00			
138	87.790	97.193	26+925.00		26+925.00			
139	88.013	96.403	26+950.00		26+950.00			
140	88.236	96.669	26+975.00		26+975.00			
141	88.459	97.036	27+000.00		27+000.00			
142	88.682	97.037	27+025.00		27+025.00			
143	88.905	97.357	27+050.00		27+050.00			
144	89.128	97.759	27+075.00		27+075.00			
145	89.351	98.173	27+100.00		27+100.00			
146	89.575	98.111	27+125.00		27+125.00			
147	89.798	98.332	27+150.00		27+150.00			
148	90.021	98.621	27+175.00		27+175.00			
149	90.244	98.777	27+200.00		27+200.00			
150	90.467	99.159	27+225.00		27+225.00			
151	90.690	99.474	27+250.00		27+250.00			
152	90.913	99.076	27+275.00		27+275.00			
153	91.136	99.231	27+300.00		27+300.00			
154	91.359	99.372	27+325.00		27+325.00			
155	91.582	99.746	27+350.00		27+350.00			
156	91.805	100.001	27+375.00		27+375.00			
157	92.029	100.443	27+400.00		27+400.00			
158	92.252	100.697	27+425.00		27+425.00			
159	92.475	101.005	27+450.00		27+450.00			
160	92.698	101.649	27+475.00		27+475.00			
161	92.921	101.007	27+500.00		27+500.00			
162	93.144	101.743	27+525.00		27+525.00			
163	93.367	101.749	27+550.00		27+550.00			
164	93.590	101.959	27+575.00		27+575.00			
165	93.813	102.171	27+600.00		27+600.00			
166	94.036	102.412	27+625.00		27+625.00			
167	94.259	102.326	27+650.00		27+650.00			
168	94.483	103.000	27+675.00		27+675.00			
169	94.706	103.000	27+700.00		27+700.00			
170	94.929	103.160	27+725.00		27+725.00			
171	95.152	103.415	27+750.00		27+750.00			
172	95.375	103.773	27+775.00		27+775.00			
173	95.598	103.946	27+800.00		27+800.00			



**COMMISSARIO DELEGATO PER L'EMERGENZA**  
DETERMINATASI NEL SETTORE DEL TRAFFICO E DELLA MOBILITÀ NEL TERRITORIO DELLE PROVINCE DI TREVISO E VICENZA

**SUPERSTRADA A PEDAGGIO**  
**PEDEMONTANA VENETA**

ATI CONCESSORARIA:

**SIS SpA**  
 Via Inverigo, 24/A  
 10146 Torino

**SACYR s.r.l.**  
 SNC s.r.l.  
 SNC s.r.l. s.p.a. s.p.a.  
 28046 Madrid

**Itinere**  
 INFRASTRUTTURE S.p.A.  
 Corso S. Felice, 1  
 20090 Sesto San Giovanni

RESPONSABILE PROGETTAZIONE: **ORDINE DEGLI INGEGNERI DELLA PROVINCIA DI CINQUE**  
1211 Dott. Ing. **Mauro Dogliani**

COORDINATORE PER LA SICUREZZA IN FASE DI PROGETTAZIONE: **ORDINE DEI GEOLGHI DELLA PROVINCIA DI TREVISO**  
ALESSIO  
10146 Torino

RESPONSABILE INTERAZIONE PRESTAZIONISTICA: **INGEGNERIA GRANDI OPERE S.r.l.**  
Via Inverigo, 24/A  
10146 Torino

TITOLO ELABORATO: **PROGETTO DELL'INFRASTRUTTURA PROFILO LONGITUDINALE ASSE NORD**  
Tav. 14 di 45 - DA PK 25+550 A PK 27+800

PROGETTO DEFINITIVO (CUP: H5103000050009)

REVISIONI:

REV.	DESCRIZIONE	REDAITTO	DATA	VERIFICATO	DATA	APPROVATO	DATA
0	PRIMA EMISSIONE	CCI	28/12/2009	ICO	30/12/2009	SIS	04/01/2010

IL RESPONSABILE DEL PROCEDIMENTO: **Ing. Giuseppe FASOLI**

IL COMMISSARIO: **Ing. Sivanio VERNIZZI**

PROTOCOLLO: \_\_\_\_\_ DEL: \_\_\_\_\_

SCALA: 1:5000/1:500