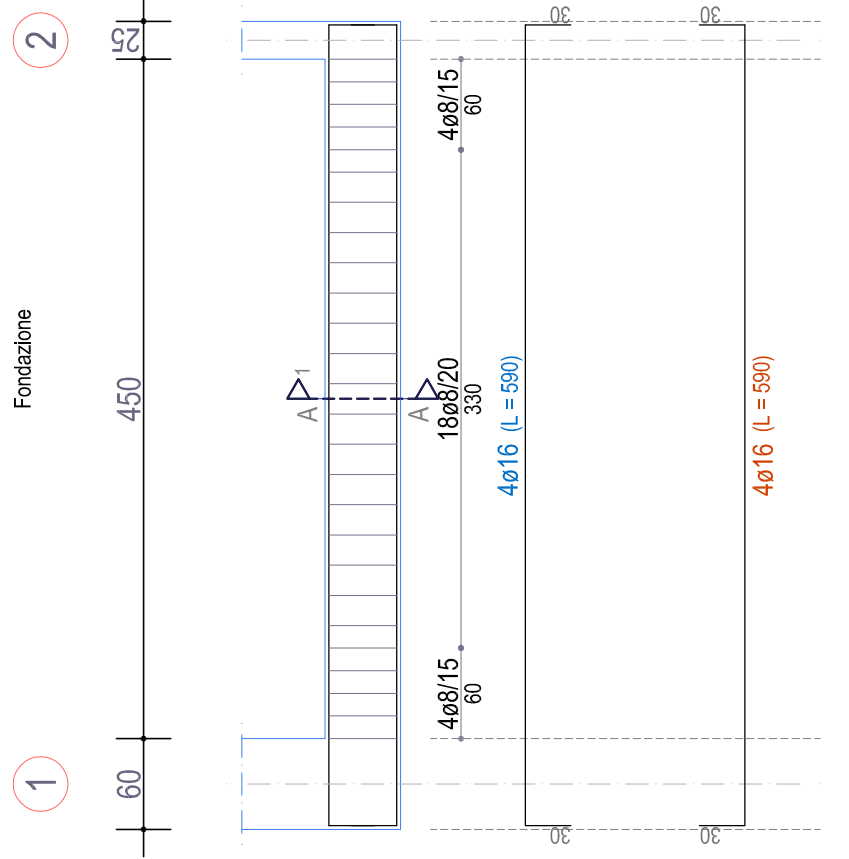
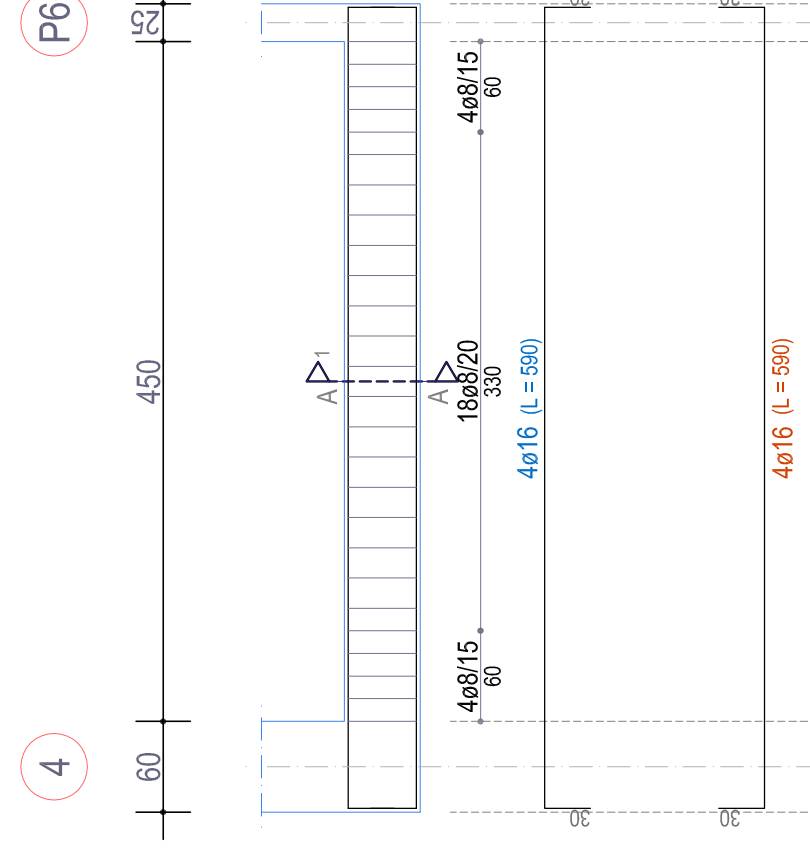


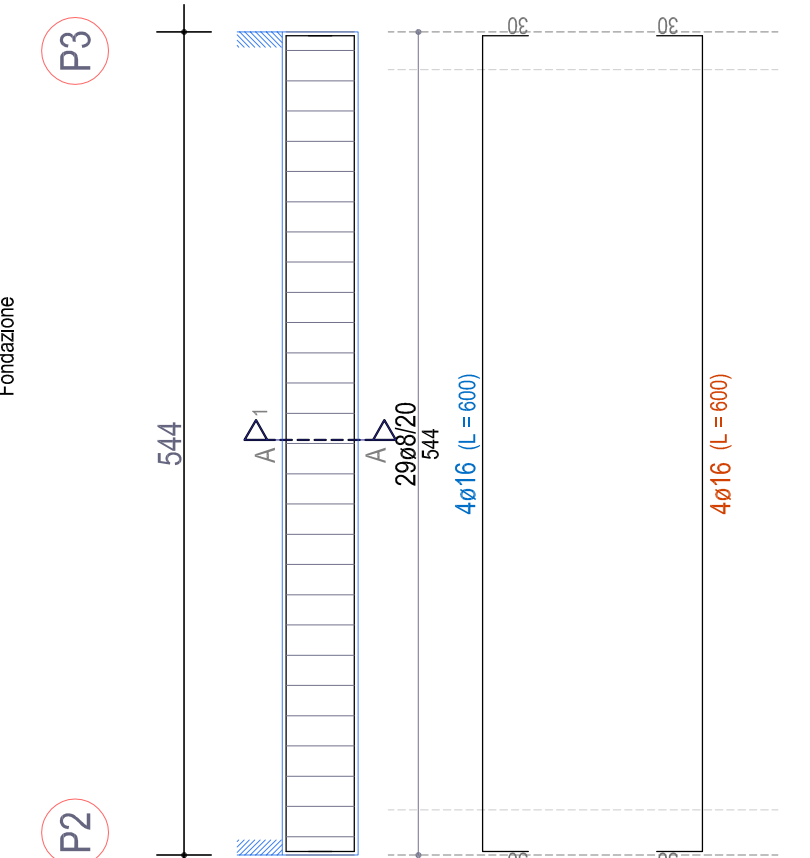
TRAVE 1-2



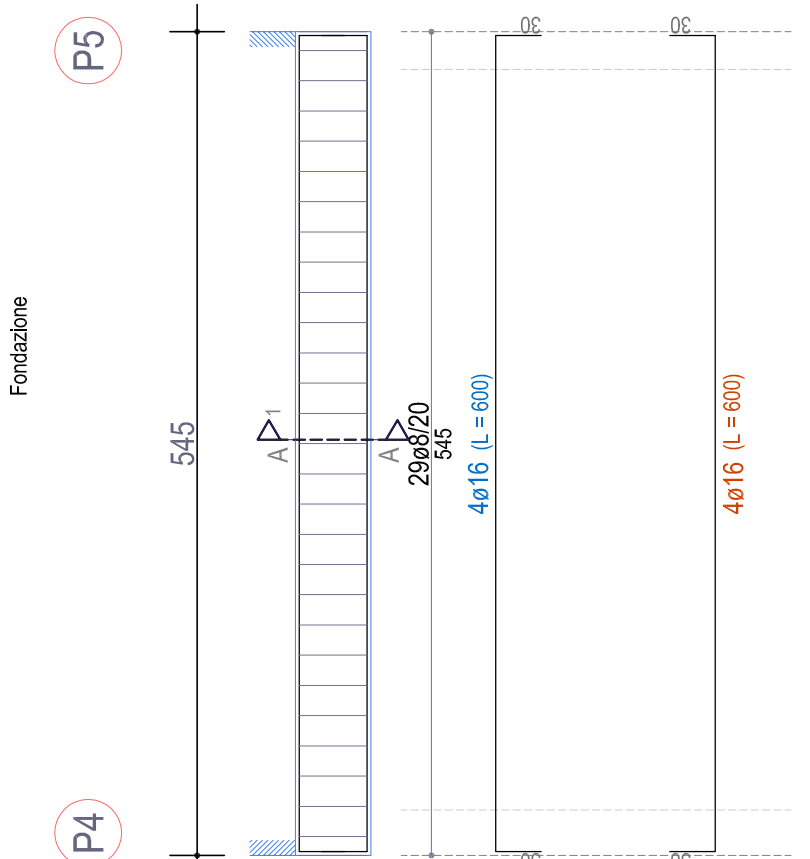
TRAVE 4-P6



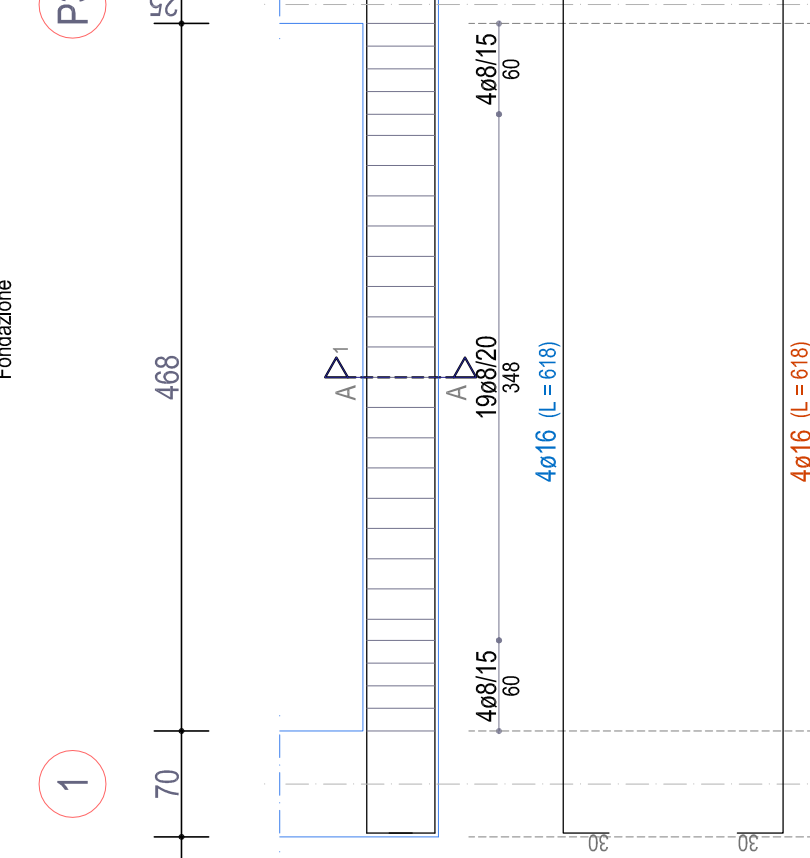
TRAVE P2-P3



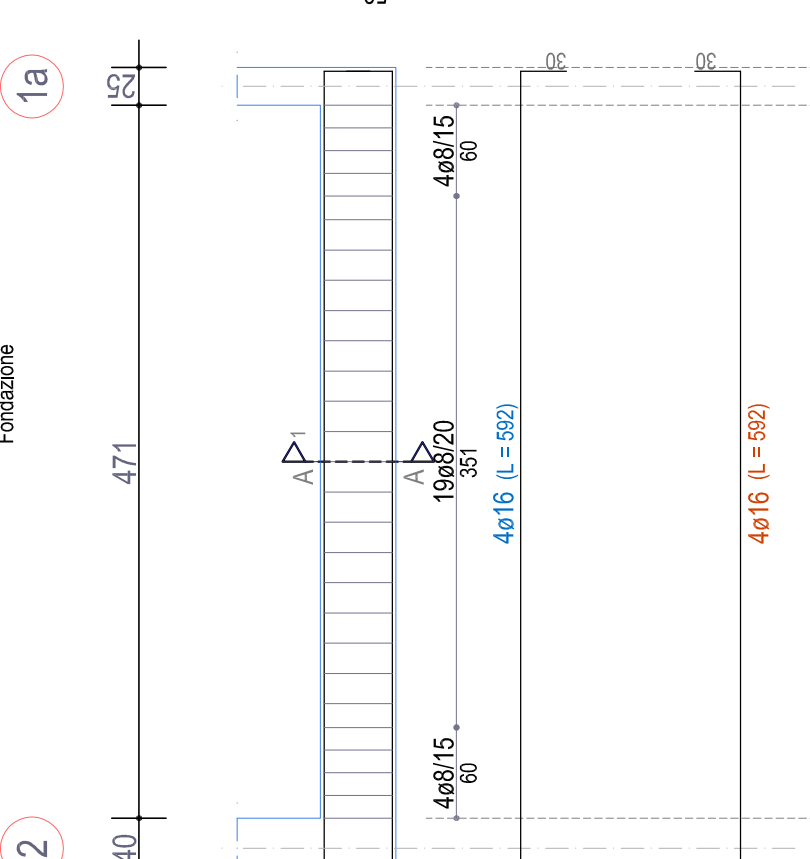
TRAVE P4-P5



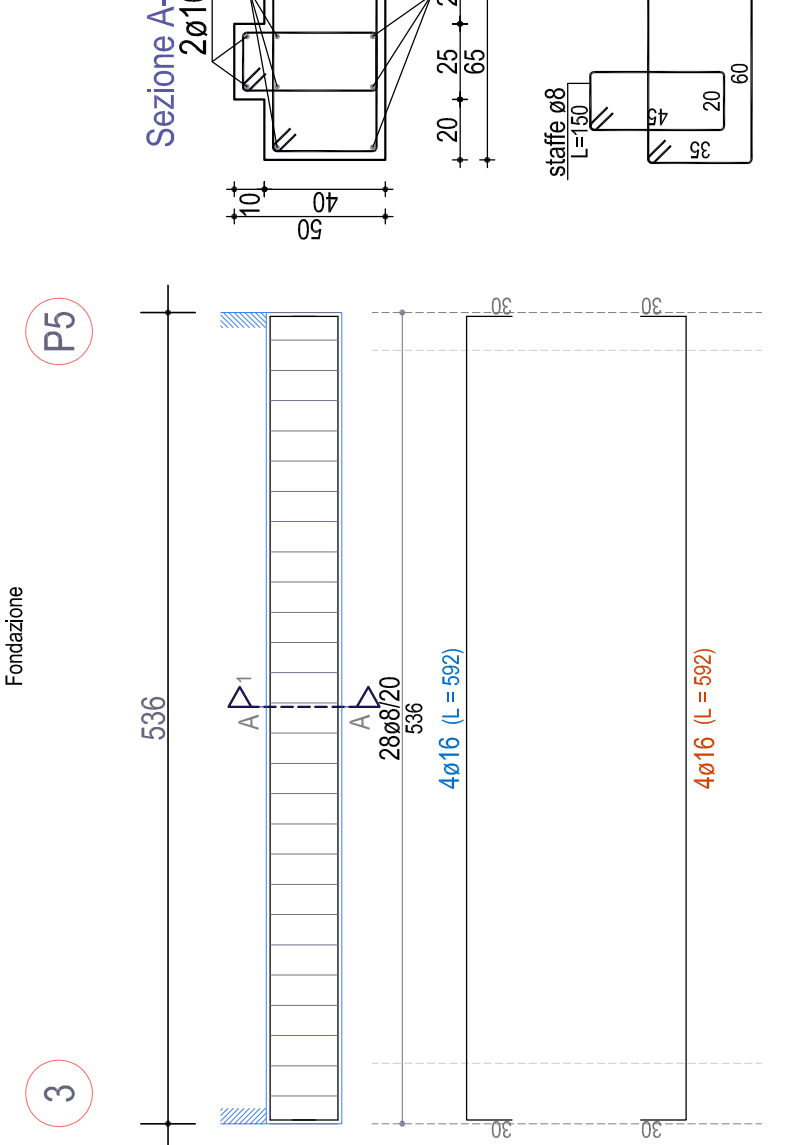
TRAVE 1-P3



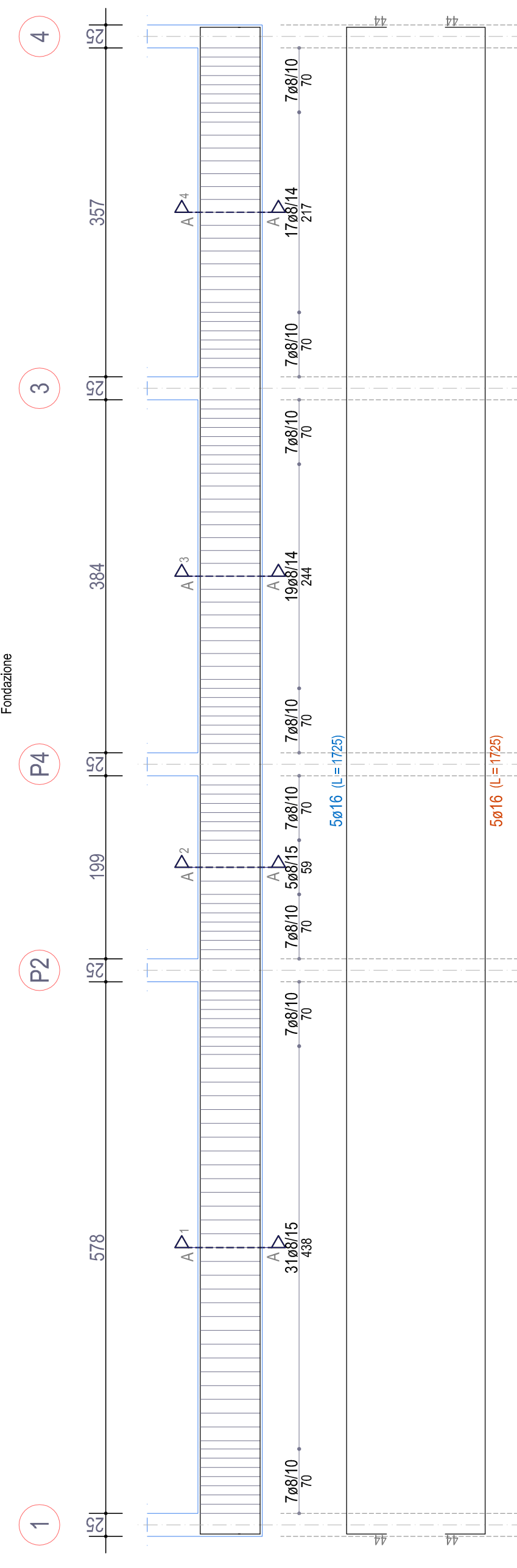
TRAVE 2-1a



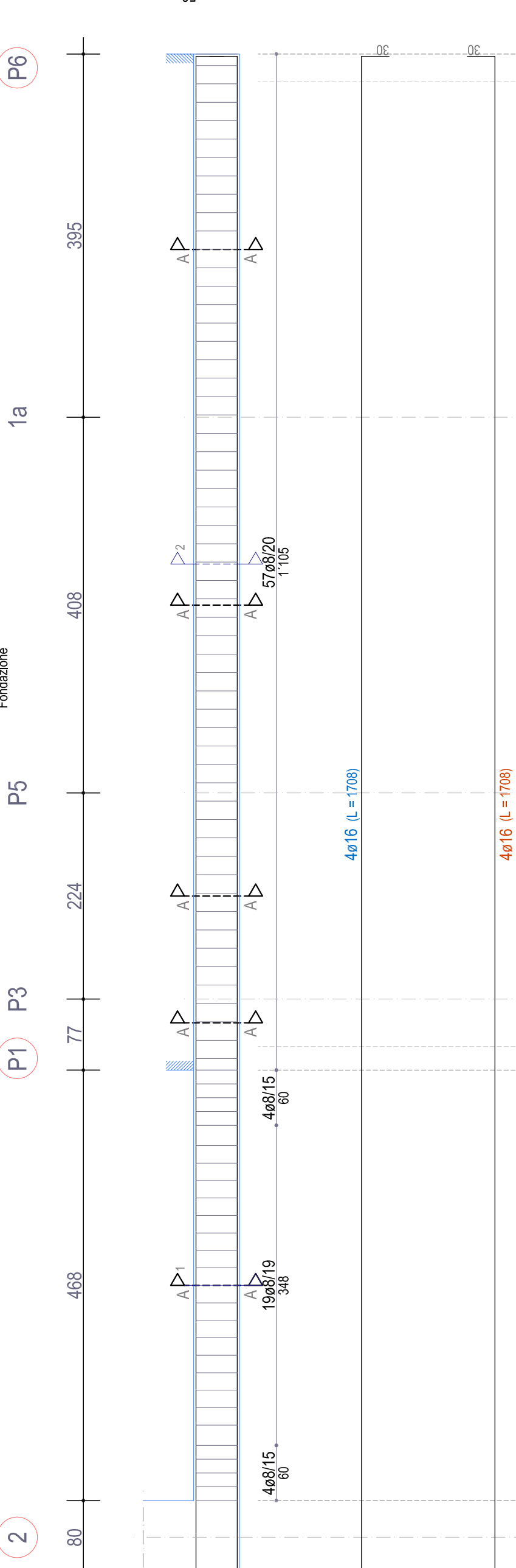
TRAVE 3-P5



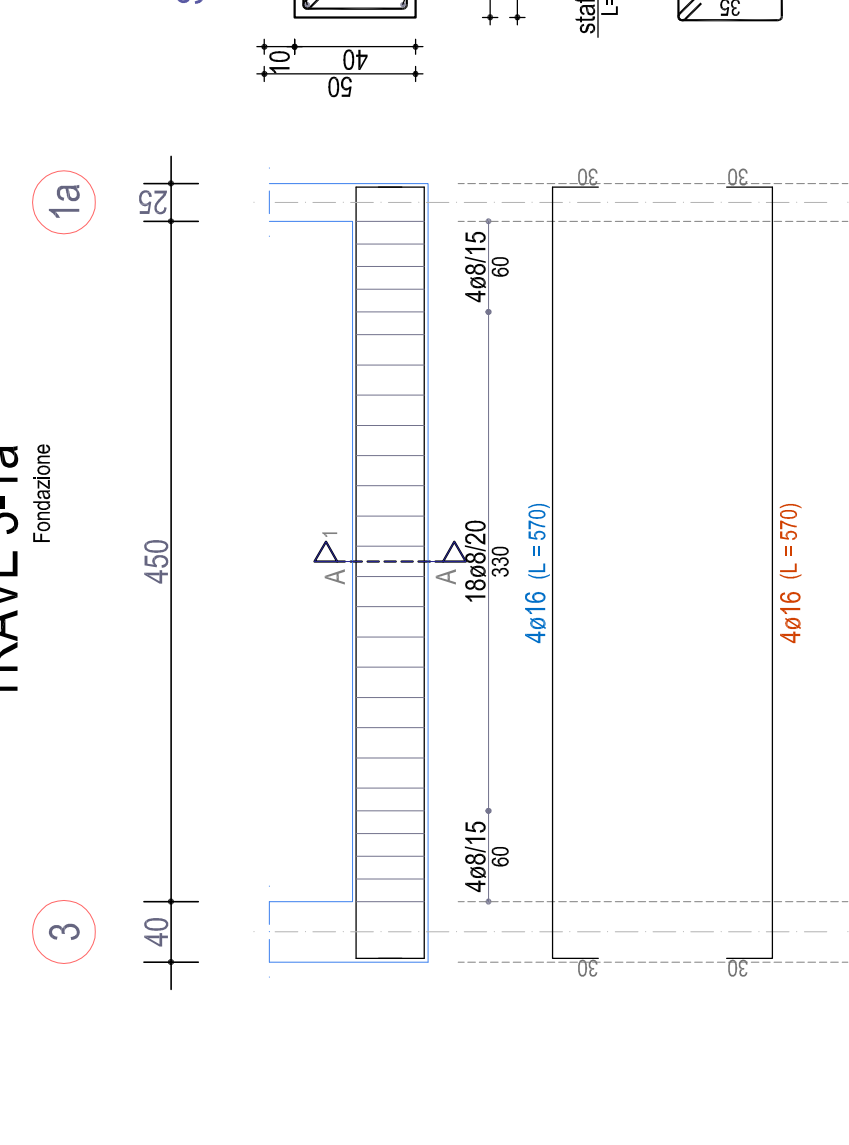
TRAVE 1-P2-P4-3-4



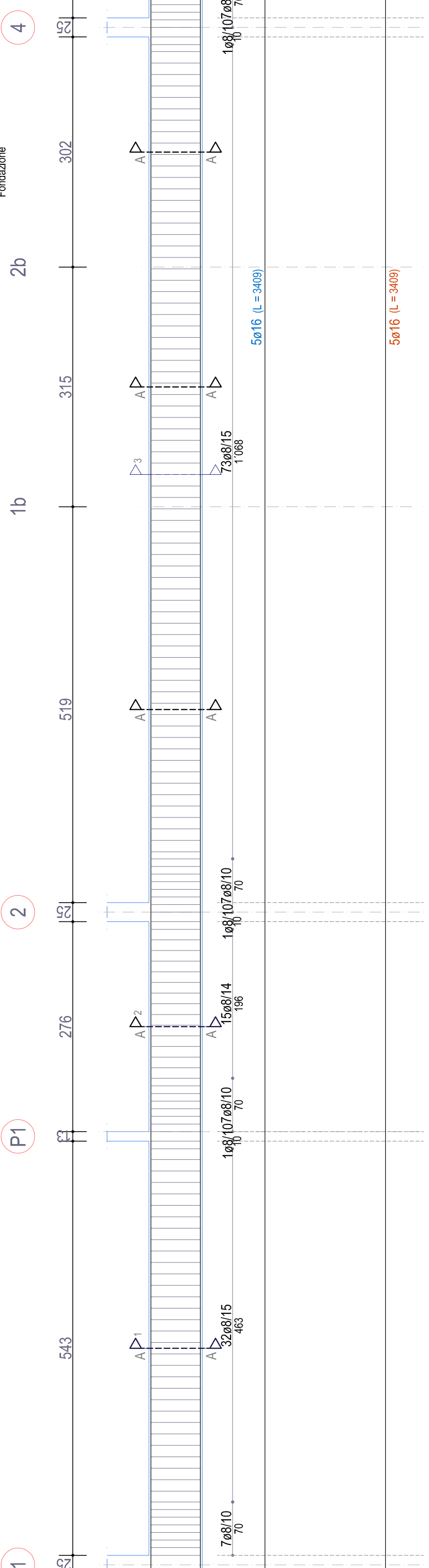
TRAVE 2-P1-P3-P5-1a-P6



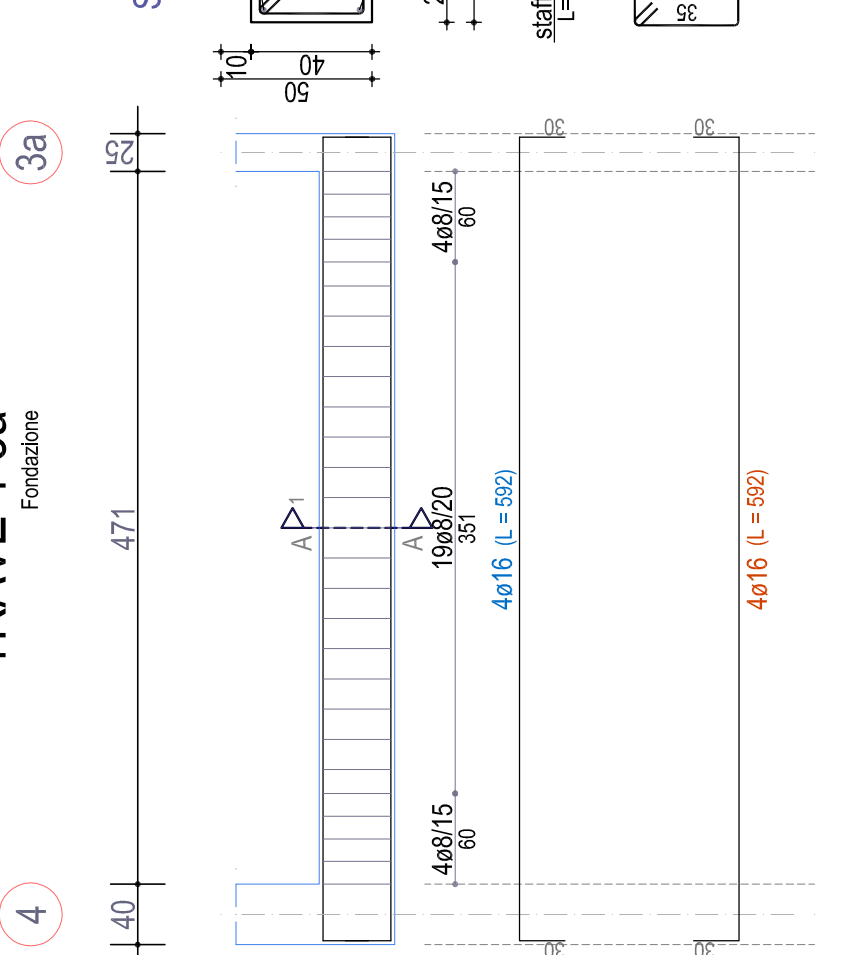
TRAVE 3-1a



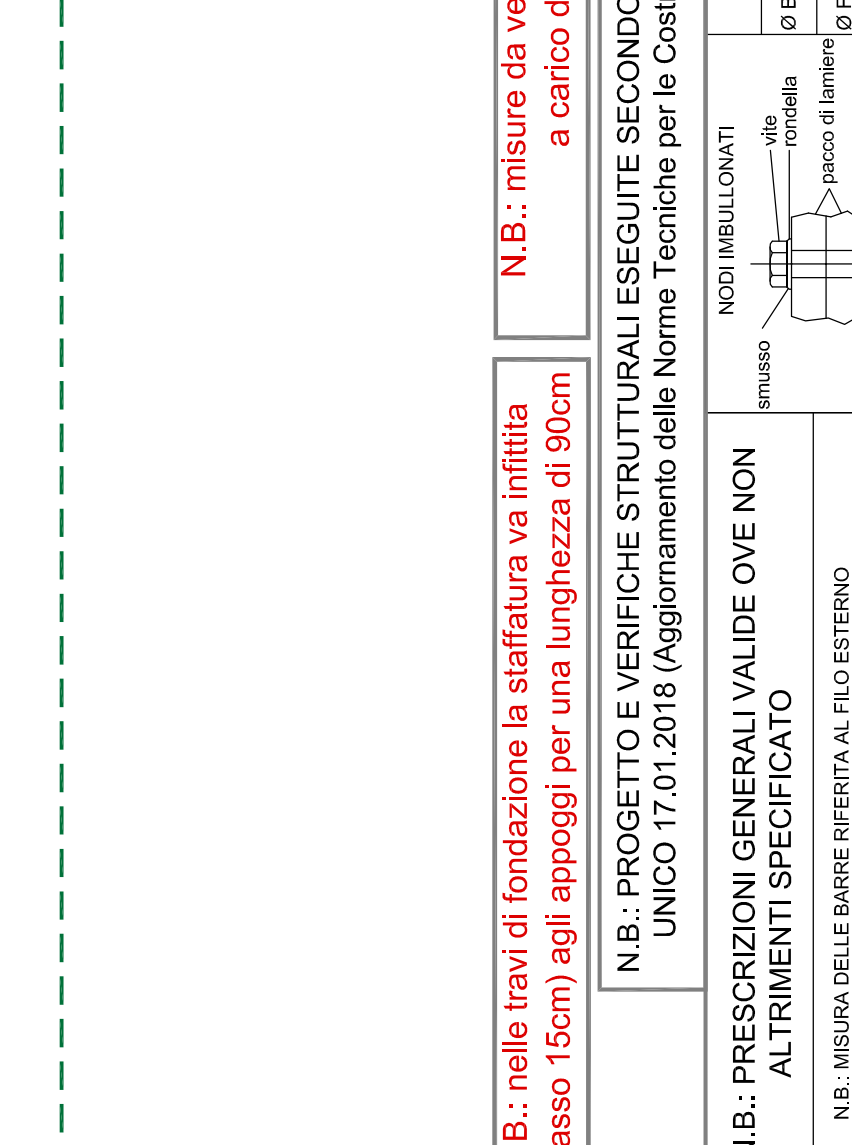
TRAVE 1-P1-2-1b-2b-4-P2-5-6



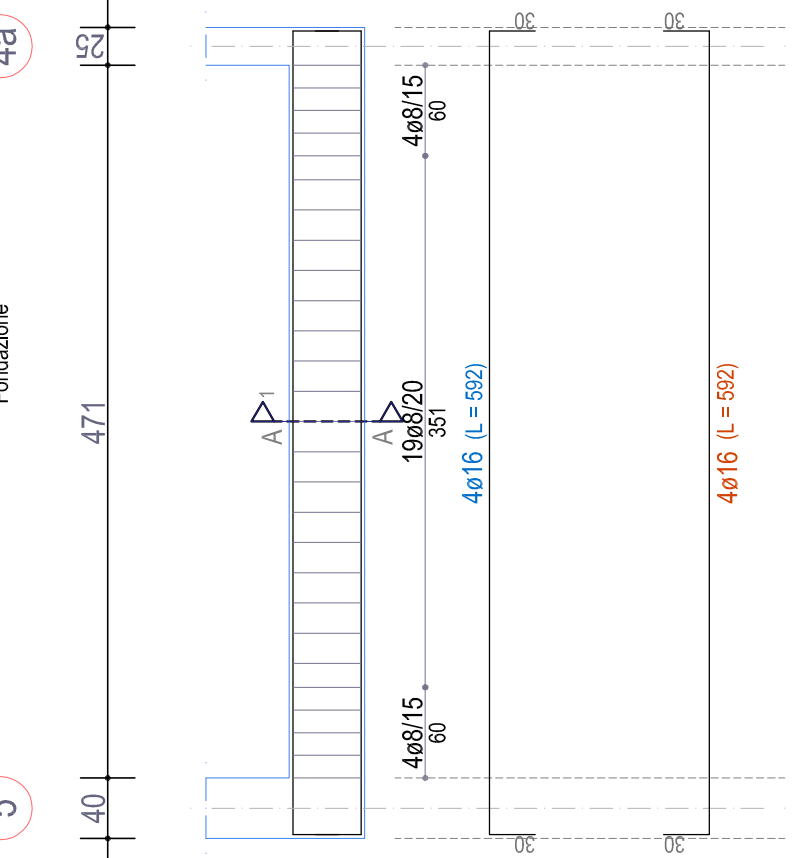
TRAVE 4-3a



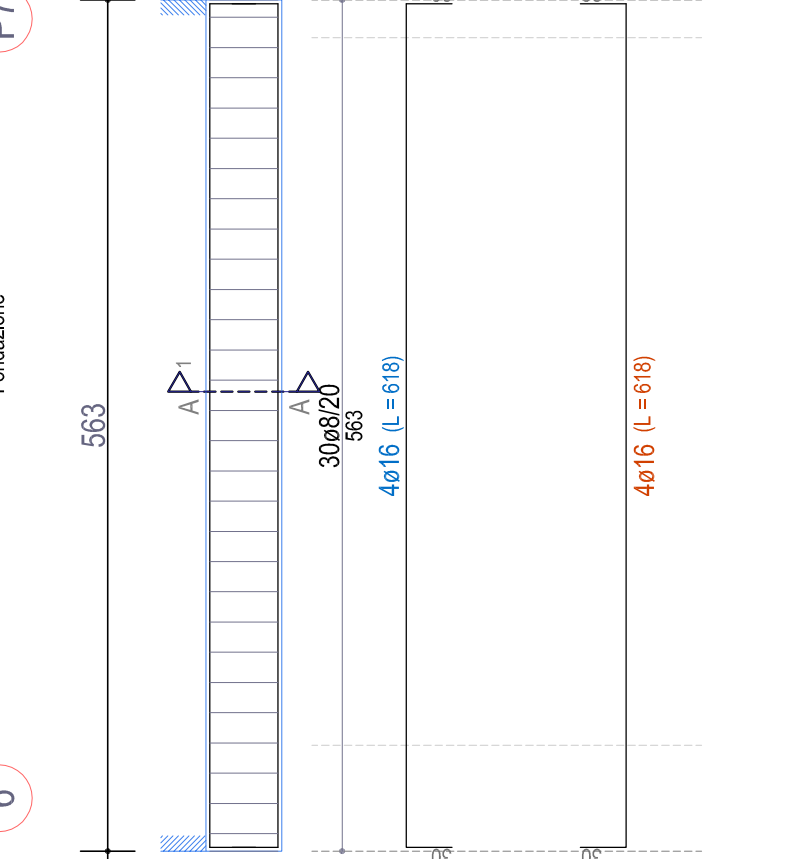
TRAVE 3-P5



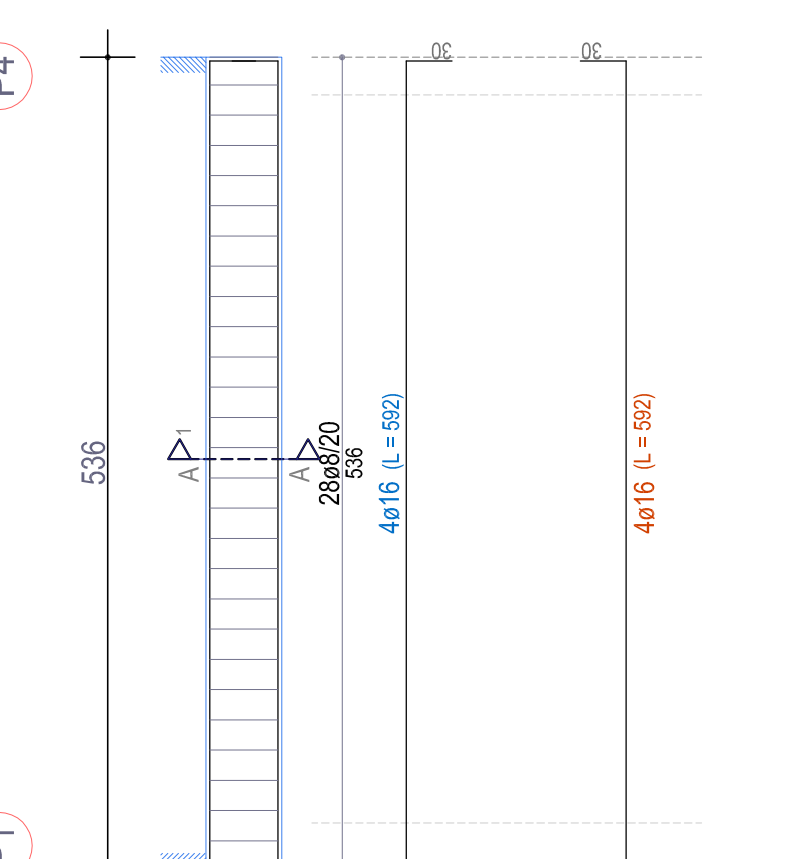
TRAVE 5-4a



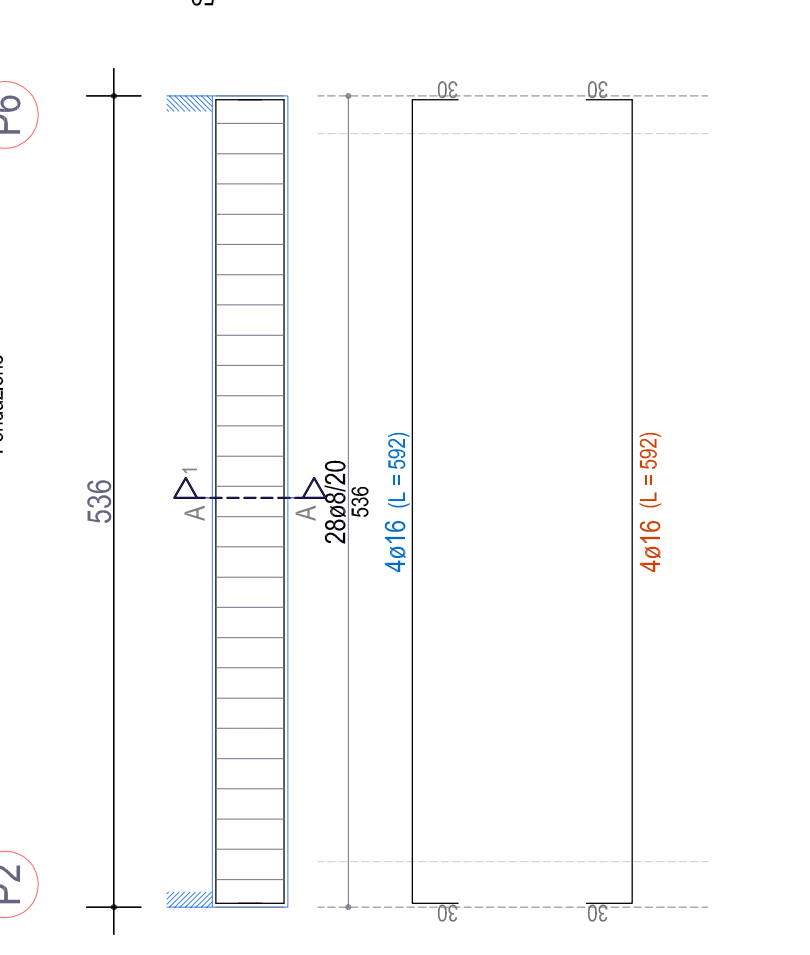
TRAVE 6-P7



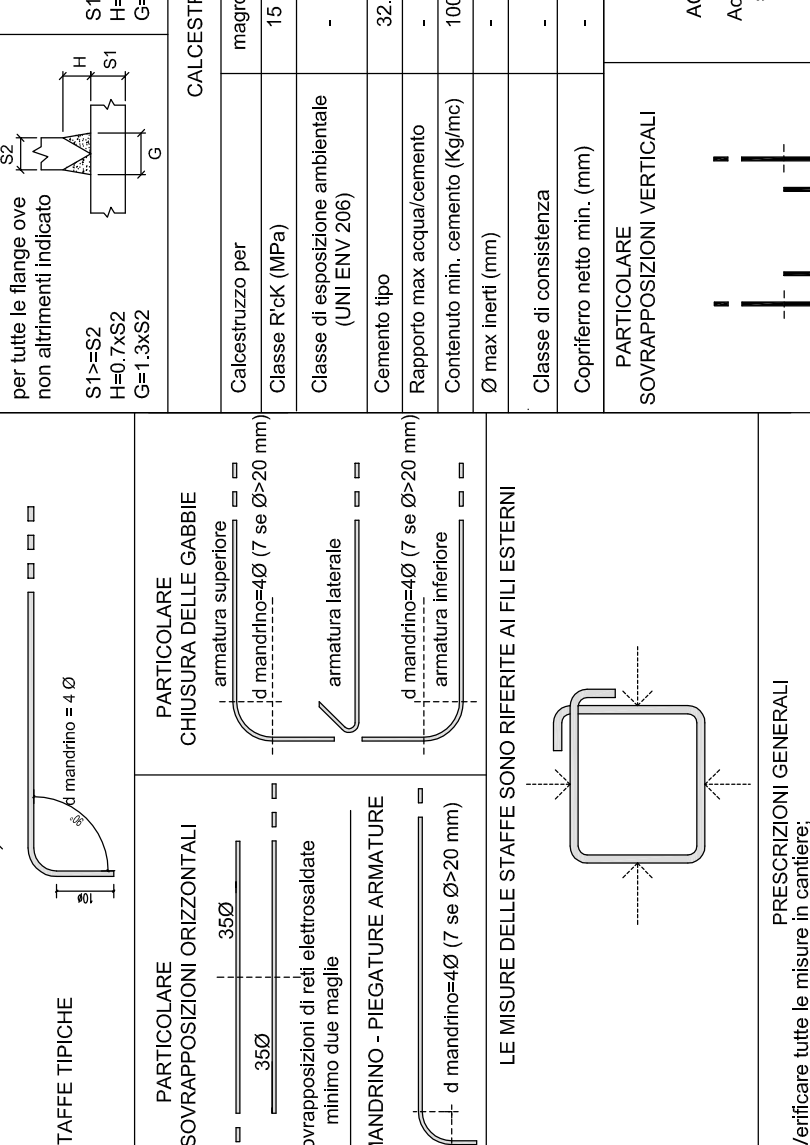
TRAVE P1-P4



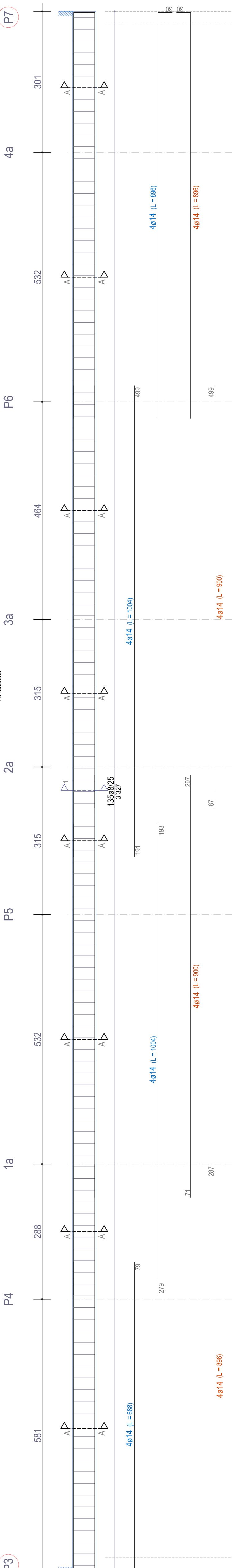
TRAVE P2-P6



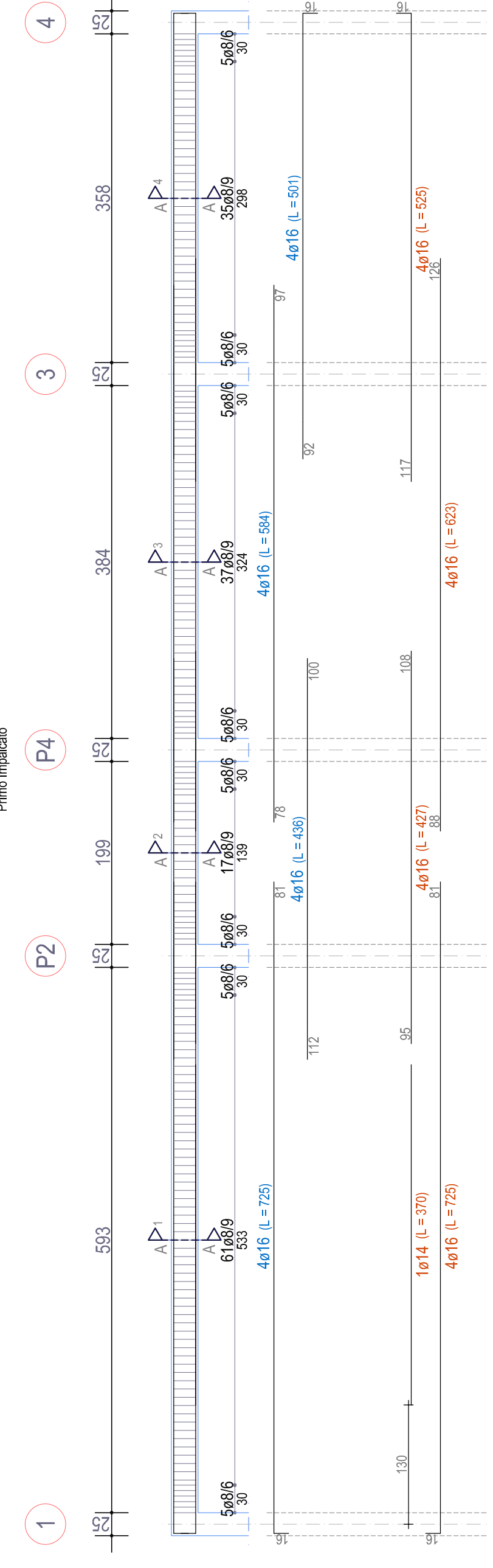
TRAVE 3-P5



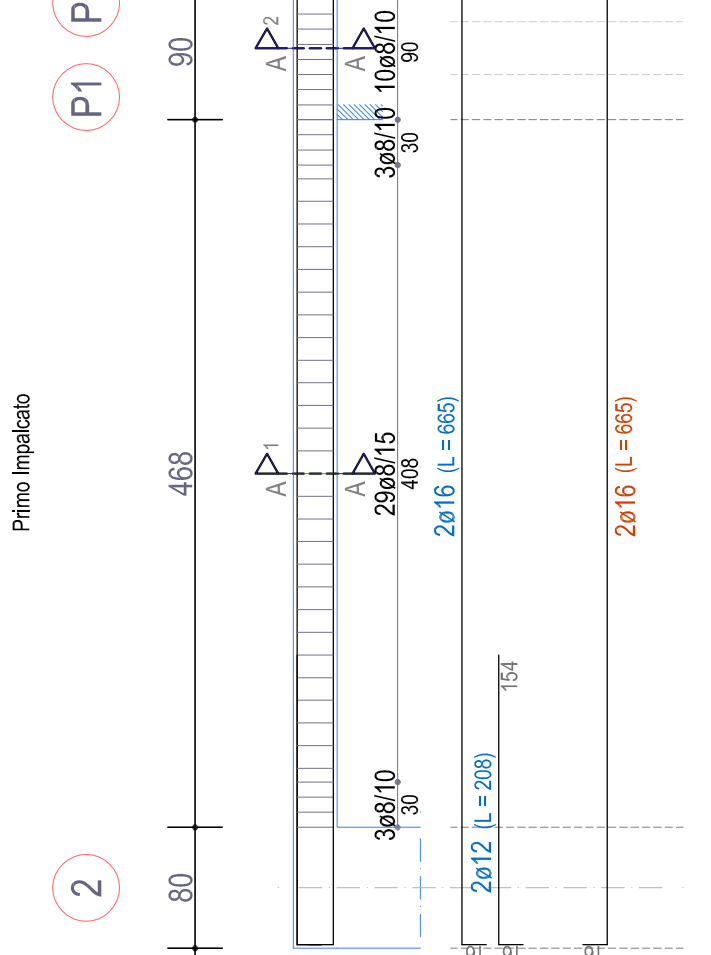
TRAVE P3-P4-1a-P5-2a-3a-P6-4a-P7



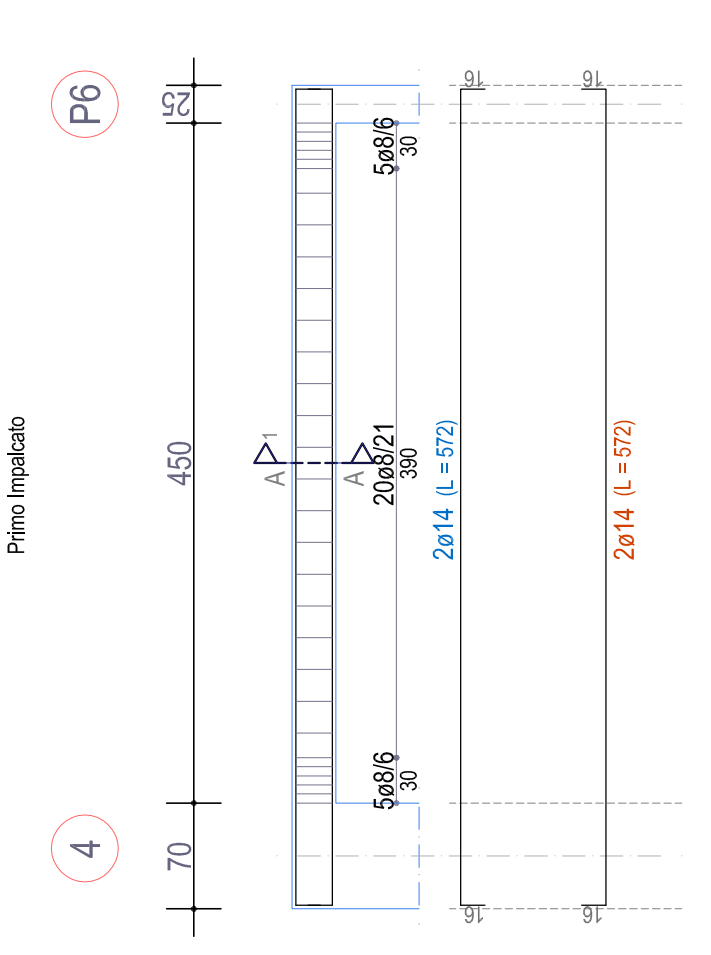
TRAVE 1-P2-P4-3-4



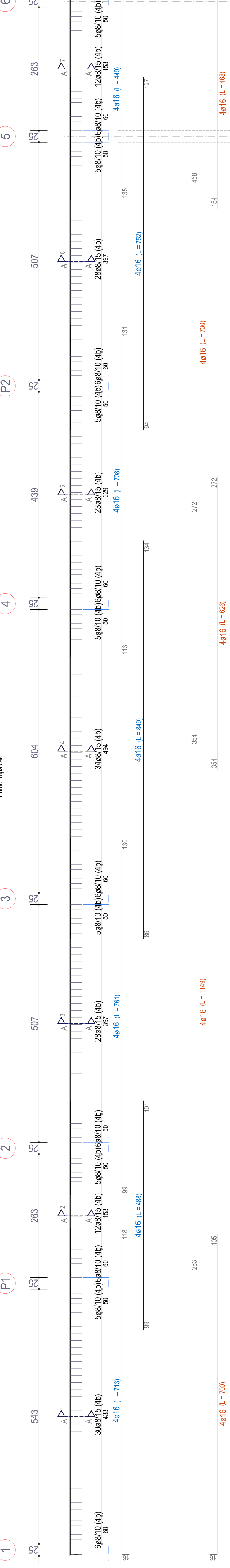
TRAVE 2-P1-P3



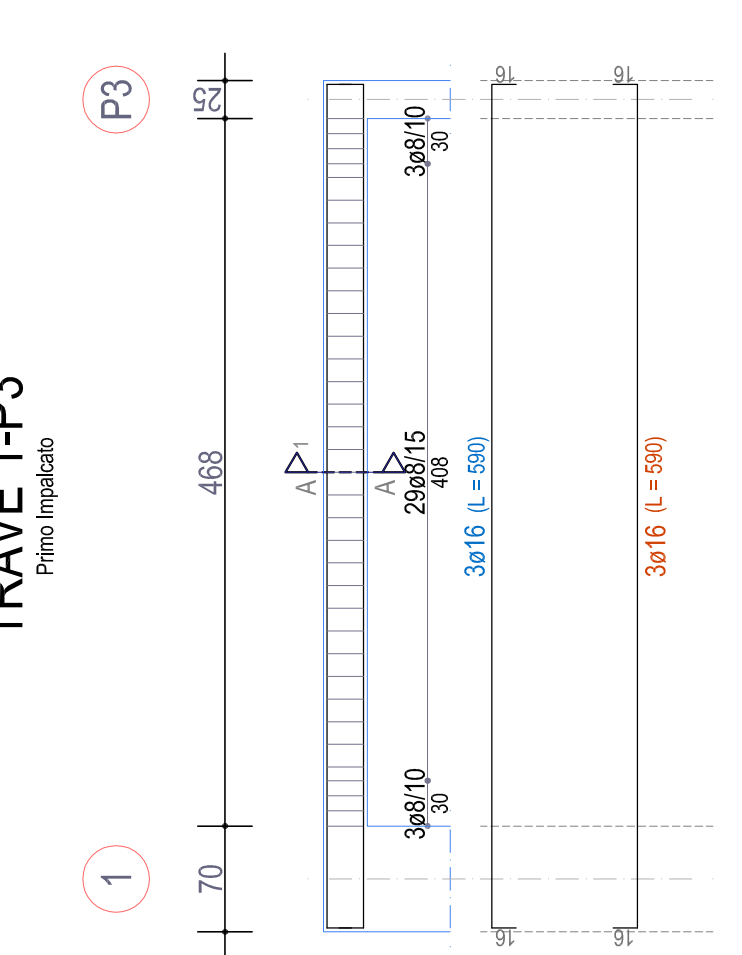
TRAVE 4-P6



TRAVE 1-P1-2-3-4-P2-5-6



TRAVE 1-P3



N.B.: nella trav di fondazione la saldatura va rifatta (spesso 15cm) ogni appoggio per una lunghezza di 50cm e carico dell'impresa

N.B.: PROGETTO E VERIFICHE STRUTTURALI ESEGUITE SECONDO IL TESTO UNICO 17.3.1.2010 (aggiornamento delle norme tecniche per le costruzioni)

N.B.: PRESCRIZIONI GENERALI VALIDE OVE NON ALTRIMENTI SPECIFICATO

N.B.: MISURA DELLE BARRE INFERIORI AL FLO BERTINO

STAFFE DI ACCOMPAGNAMENTO

STAFFE TRONCHI

PARTICOLARE

SOVRAPPONGIMENTI ORIZZONTALI

CHIAVILLI DELLE GIUNTE

SOVRAPPONGIMENTI VERTICALI

ACCORDO PER CEMENTAZIONE METALLICA

ACCORDO PER CEMENTAZIONE METALLICA

ACCORDO PER CEMENTAZIONE METALLICA

ACCORDO PER CEMENTAZIONE METALLICA

ACCORDO PER CEMENTAZIONE METALLICA

ACCORDO PER CEMENTAZIONE METALLICA



PROGETTO ESECUTIVO

ELABORATO E.A.R. - 28

PROGETTO:
- ARMATURE TRAVI DI FONDAZIONE E TRAM PRIMO IMPALCATO

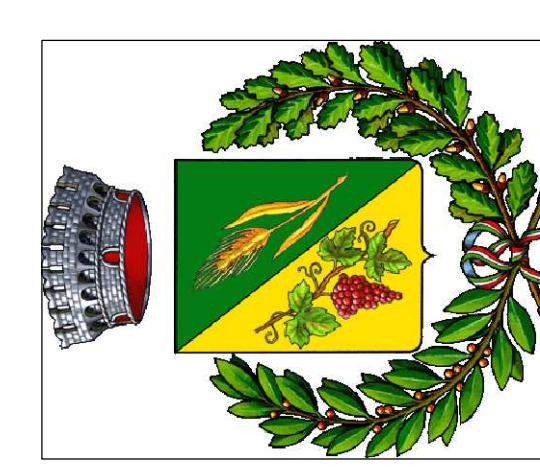
scala 1:50 - 1:20

PROGETTO:
ING. DAVIDE GONZATO
via Legione Antonini, 135/C
36100 Vicenza (VI)
Tel.- Fax. 0444-341869
e-mail: davide.archingegno@gmail.com

COMMITTEE
COMUNE DI SANDRIGO

RESPONSABILE UNICO PROCEDIMENTO
GEOM. GIUSEPPE RENIERO

DATA: 31.10.2018



COMUNE DI SANDRIGO
PROVINCIA DI VICENZA
REALIZZAZIONE NUOVO CENTRO POLIFUNZIONALE SCOLASTICO, SPORTIVO E RICREATIVO
SECONDO STRALCIO

OPERA INFORMATICA: LAVORI DI PROVA PER LA VERIFICA DELLA PROGETTAZIONE ESECUTIVA E DELL'ESISTENZA DI ADEGUATE RISORSE FINANZIARIE PER LA REALIZZAZIONE DELL'OPERA. LAVORI DI PROVA PER LA VERIFICA DELLA PROGETTAZIONE ESECUTIVA E DELL'ESISTENZA DI ADEGUATE RISORSE FINANZIARIE PER LA REALIZZAZIONE DELL'OPERA.