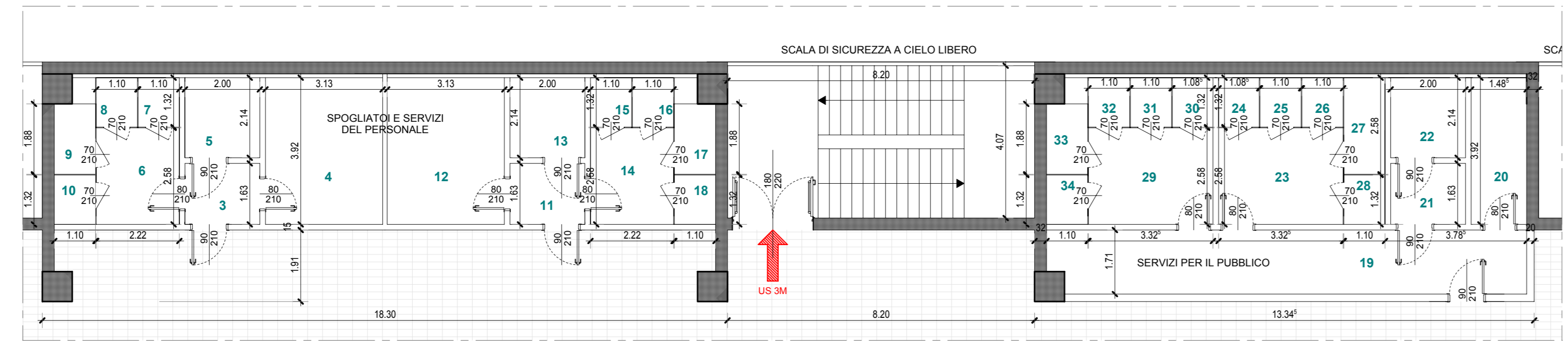
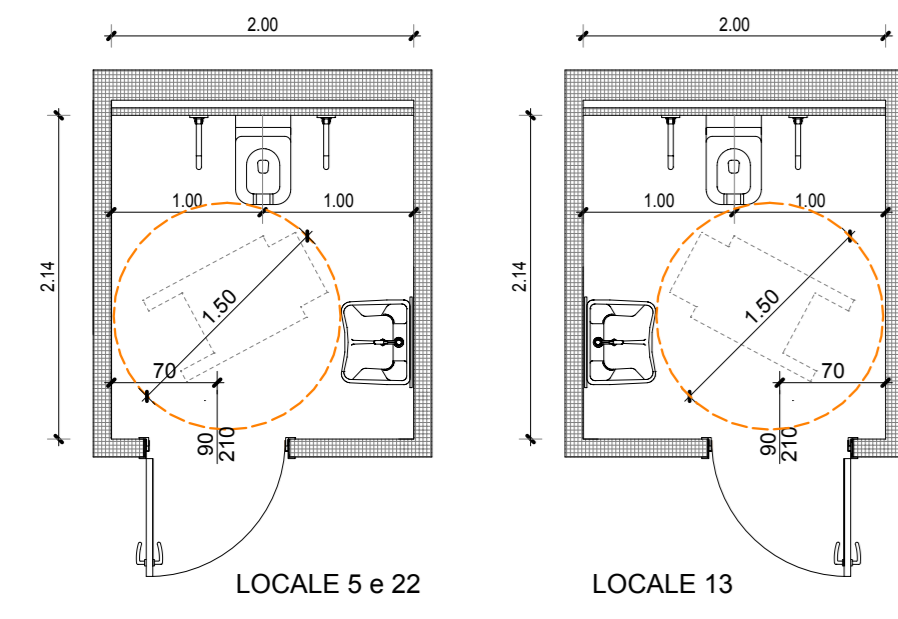
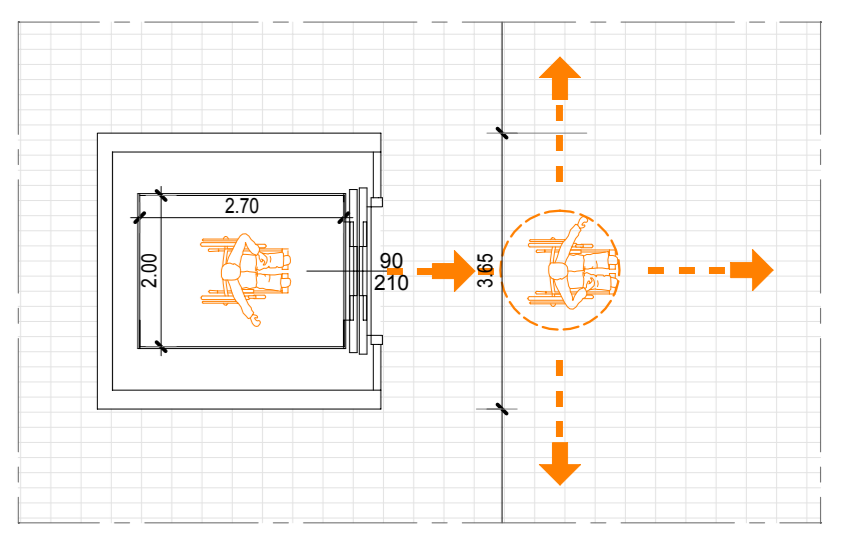
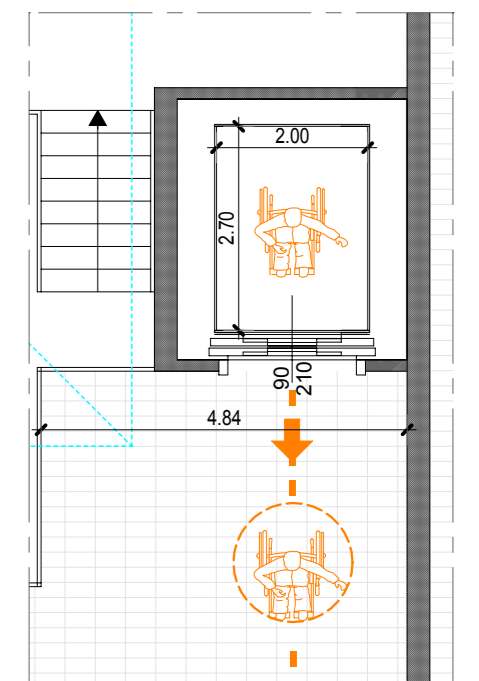


**DIMOSTRAZIONE ACCESSIBILITA' AI SERVIZI (IGENICI D.M. 236/89) SCALA 1:50**



**INGRANDIMENTO AREA SERVIZI - SCALA 1:100**

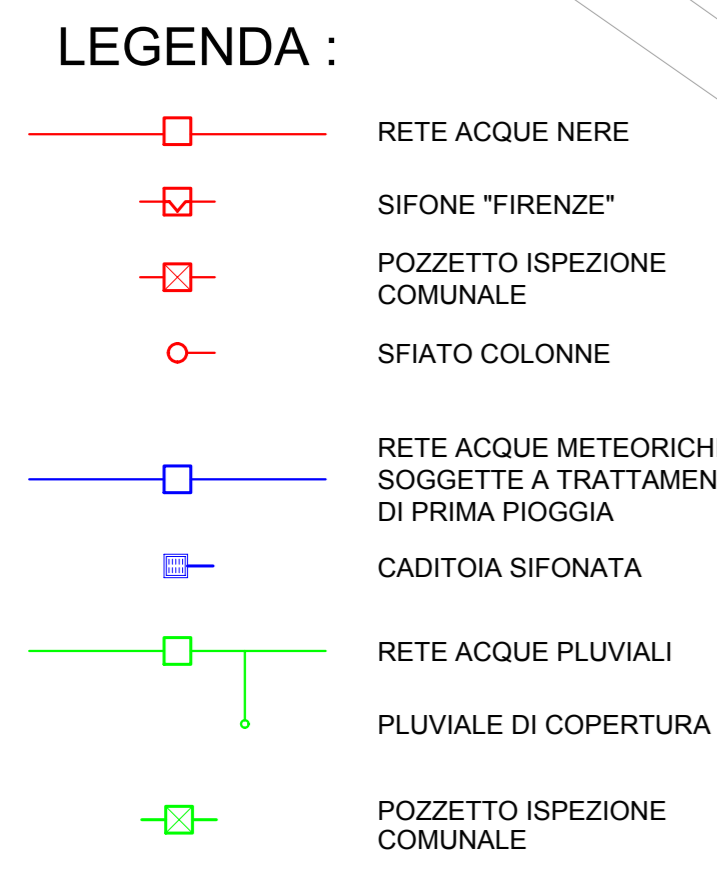
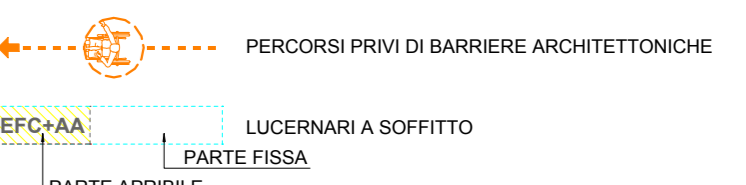
**PARTICOLARE 1 DIMOSTRAZIONE ACCESSIBILITA' SBARCO ASCENSORE AL PIANO PRIMO SCALA 1:50**



**PARTICOLARE 2 DIMOSTRAZIONE ACCESSIBILITA' SBARCO ASCENSORE AL PIANO PRIMO SCALA 1:50**

**TABELLA RIEPILOGATIVA DEI RAPPORTI AEROLLUMINANTI**

n	descrizione	superficie m²	h	volume m³	sup. illuminata m²		rapporto	sup. servita m²		rapporto
					necessaria	effettiva		necessaria	effettiva	
1	AREA VENDITA	7.296,00	6,84	49.910,40	241,22	348,00	>100	72,360	120,00	>100
2	RICEVIMENTO MERCI	65,00	6,84	443,60	2,17	4,00	>100	2,17	4,00	>100
3	DISPENSARIO	3,26	6,24	20,34	---	---	---	---	---	---
4	SPOLIATOIO	12,27	6,24	76,56	---	---	---	---	---	---
5	WC	4,28	6,24	26,71	---	---	---	---	---	---
6	ANTI	5,73	6,24	35,76	---	---	---	---	---	---
7	WC	1,45	6,24	9,05	---	---	---	---	---	---
8	WC	1,45	6,24	9,05	---	---	---	---	---	---
9	DOCCIA	2,07	6,24	12,82	---	---	---	---	---	---
10	DOCCIA	1,45	6,24	9,05	---	---	---	---	---	---
11	DISPENSARIO	3,26	6,24	20,34	---	---	---	---	---	---
12	SPOLIATOIO	12,27	6,24	76,56	---	---	---	---	---	---
13	WC	4,28	6,24	26,71	---	---	---	---	---	---
14	ANTI	5,73	6,24	35,76	---	---	---	---	---	---
15	WC	1,45	6,24	9,05	---	---	---	---	---	---
16	WC	1,45	6,24	9,05	---	---	---	---	---	---
17	DOCCIA	2,07	6,24	12,82	---	---	---	---	---	---
18	DOCCIA	1,45	6,24	9,05	---	---	---	---	---	---
19	DISPENSARIO	21,84	6,24	136,81	---	---	---	---	---	---
20	NURSERY	5,81	6,24	36,25	---	---	---	---	---	---
21	ANTI	3,26	6,24	20,34	---	---	---	---	---	---
22	WC	4,28	6,24	26,71	---	---	---	---	---	---
23	ANTI	6,90	6,24	43,01	---	---	---	---	---	---
24	WC	1,45	6,24	9,05	---	---	---	---	---	---
25	WC	1,45	6,24	9,05	---	---	---	---	---	---
26	WC	1,45	6,24	9,05	---	---	---	---	---	---
27	WC	2,84	6,24	17,72	---	---	---	---	---	---
28	WC	1,45	6,24	9,05	---	---	---	---	---	---
29	ANTI	5,56	6,24	34,61	---	---	---	---	---	---
30	WC	1,45	6,24	9,05	---	---	---	---	---	---
31	WC	1,45	6,24	9,05	---	---	---	---	---	---
32	WC	1,45	6,24	9,05	---	---	---	---	---	---
33	WC	2,84	6,24	17,72	---	---	---	---	---	---
34	WC	1,45	6,24	9,05	---	---	---	---	---	---



**PIANTA PIANO PRIMO - SCALA 1:200**

**ALLEGATO 39**  
**INIZIATIVE INDUSTRIALI S.p.A.**  
 PROROGA DETERMINAZIONE N° 912 DEL 10/10/2017  
 VALUTAZIONE IMPATTO AMBIENTALE EDIFICI A-E  
**PARCO COMMERCIALE "LE PRAMIDI"**

**COMUNE DI TORRI DI QUARTESOLO**

**COSTRUZIONE DI UN EDIFICIO AD USO COMMERCIALE IN VIA VERCELLI DENOMINATO EDIFICIO "E"**