



1. *Magnolia grandiflora*



2. *Pyrus calleryana*



3. *Lagerstroemia indica*



4. *Quercus robur* "fastigiata"



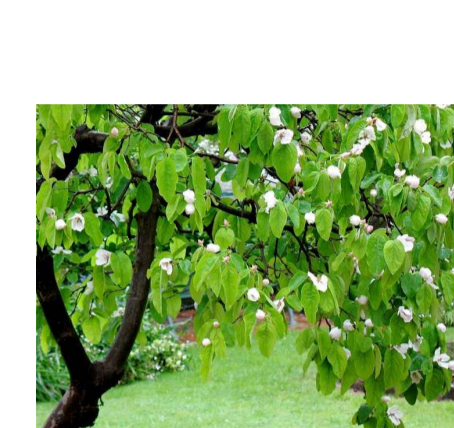
5. *Carpinus betulus*



6. *Celtis australis*



7. *Koeleria paniculata*



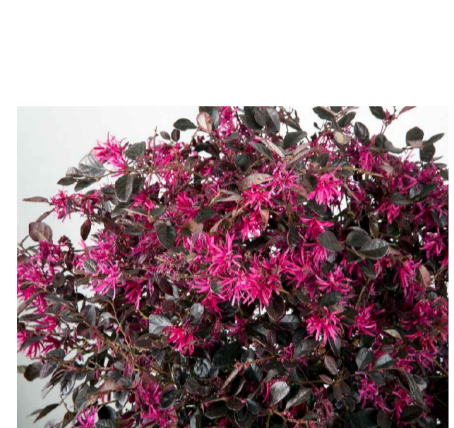
8. *Cydonia oblonga*



10. *Amelanchier canadensis*



11. *Taxus fastigiata* "aurea"



16. *Loropetalum chinensis* "rubrum Fire Dance"



18. *Nandina domestica*



19. *Lonicera nitida*



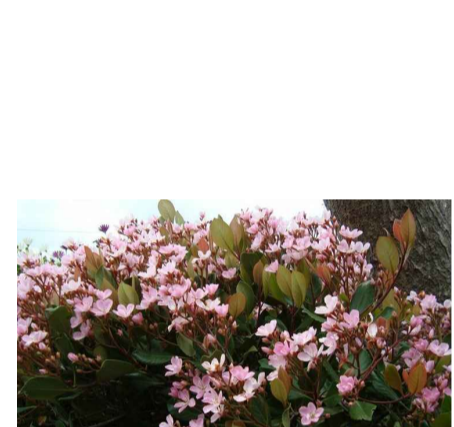
23. *Miscanthus sinensis* "adagio"



26. *Salvia nemerosa*



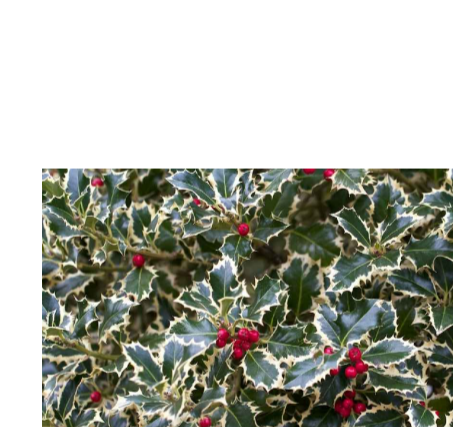
29. *Phormium tenax* "variegata"



30. *Raphiolepis indica*



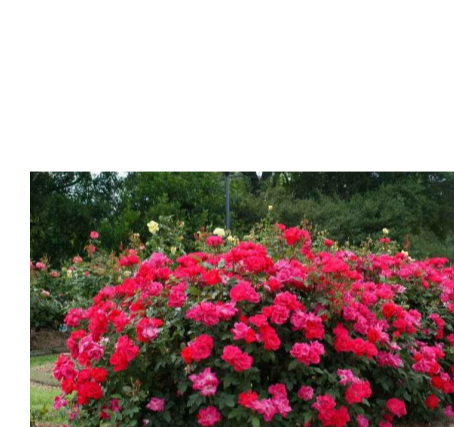
31. *Pittosporum tobira nana*



33. *Ilex aquifolium* "argenteo marginata"



38. *Phlox fruticosa*



39. *Rosa Meiland* "Knock Out"



40. *Euphorbia characias*



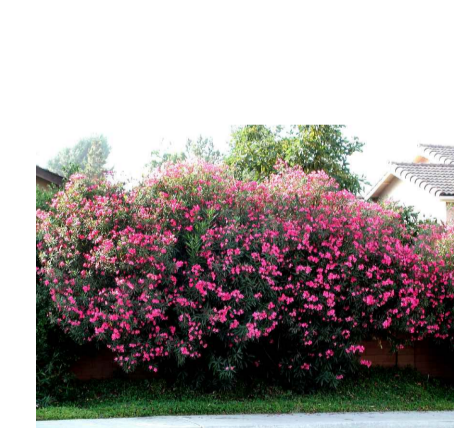
41. *Cercidiphyllum japonicum* "pendula"



42. *Photinia nana*



43. *Miscanthus* "morning light"



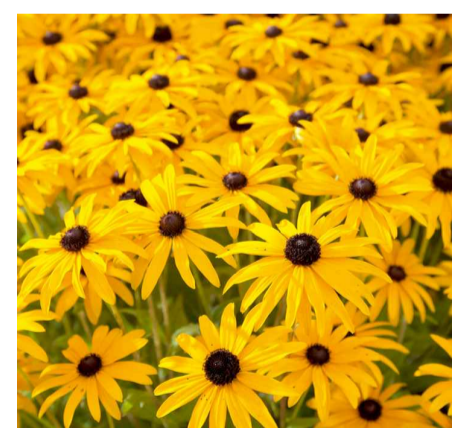
44. *Nerium oleander*



45. *Rosmarinus officinalis* "prostratum"



46. *Pennisetum alopecuroides* "hameln"



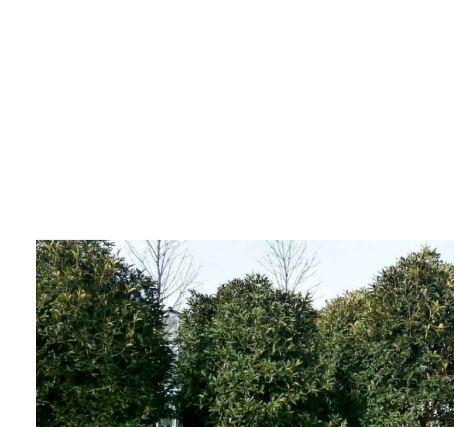
47. *Rudbeckia* "goldsturm"



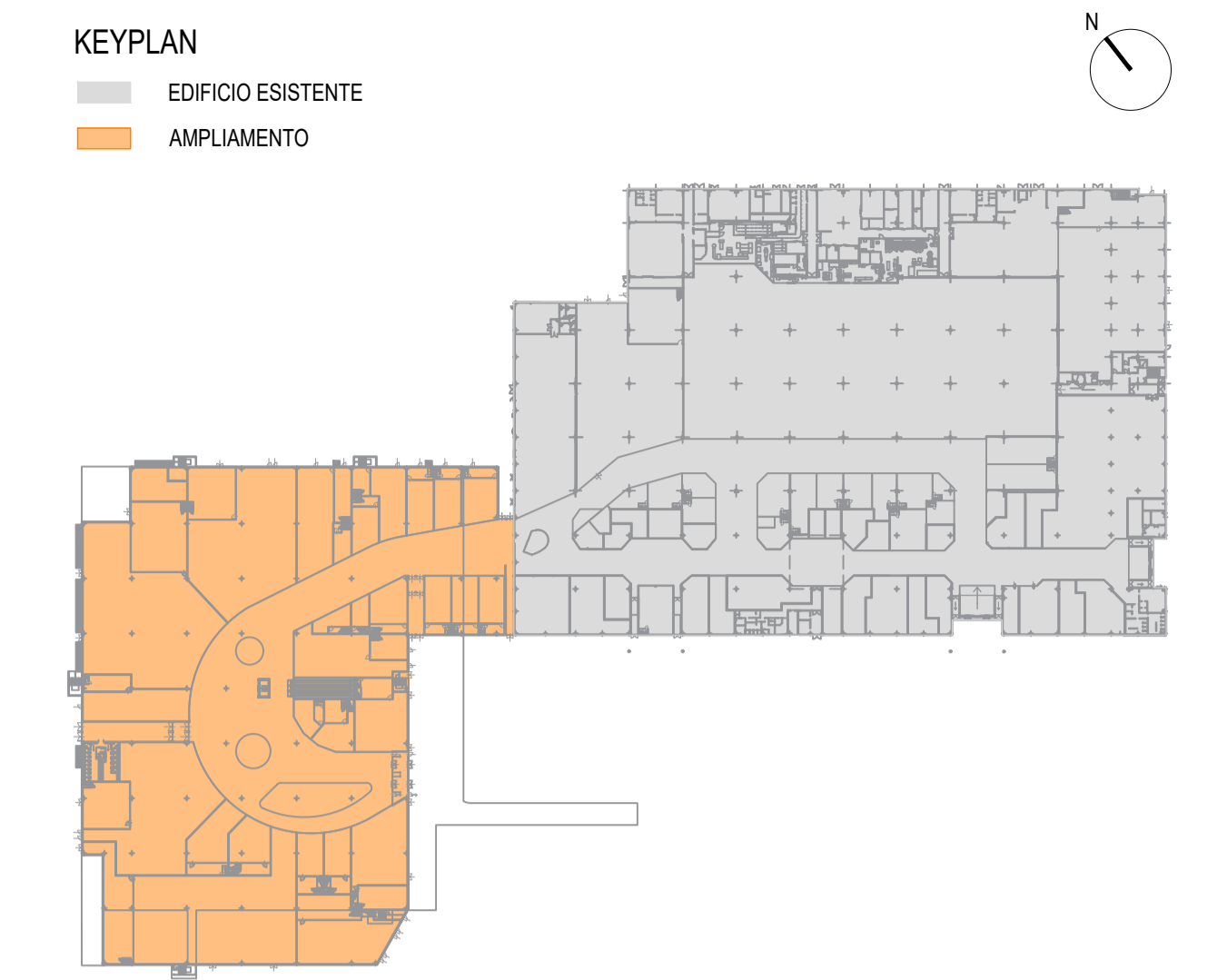
48. *Viburnum propinquum*



49. *Cornus mas*



50. *Osmanthus armatus*



- LEGENDA**
- ALBERATURE:**
- 1. *Magnolia grandiflora*
 - 2. *Pyrus calleryana*
 - 3. *Lagerstroemia indica*
 - 4. *Quercus robur* "fastigiata"
 - 5. *Carpinus betulus*
 - 6. *Celtis australis*
 - 7. *Koeleria paniculata*
 - 8. *Cydonia oblonga*
 - 9. *Parrotia persica*
 - 10. *Amelanchier canadensis*
 - 11. *Taxus fastigiata* "aurea"
 - 12. *Cercis siliquastrum*
 - 13. *Hamamelis mollis*
 - 14. *Cotinus coggygria royal purple*
 - 15. *Cornus alba* "elegantissima"
 - 16. *Loropetalum chinensis* "rubrum Fire Dance"
 - 17. *Hemerocallis fulvia* "arancione"
 - 18. *Nandina domestica*
 - 19. *Lonicera nitida*
 - 20. *Kolkwitzia amabilis*
 - 21. *Ligustrum lucidum* "tricolor"
 - 22. *Hydrangea paniculata*
 - 23. *Miscanthus sinensis* "adagio"
 - 24. *Taxus baccata* (topiata sfera)
 - 25. *Osmanthus aquifolium*
 - 26. *Salvia nemerosa*
 - 27. *Rudbeckia* "goldsturm"
 - 28. *Berberis thunbergii* "atropurpurea nana"
 - 29. *Phormium tenax* "variegata"
 - 30. *Raphiolepis indica*
 - 31. *Pittosporum tobira nana*
 - 32. *Erigeron karvinskianus*
 - 33. *Ilex aquifolium* "argenteo marginata"
 - 34. *Taxus baccata* (topiata sfera)
 - 35. *Osmanthus aquifolium*
 - 36. *Pachissandra terminalis*
 - 37. *Lagerstroemia indica*
 - 38. *Phlox fruticosa*
 - 39. *Rosa Meiland* "Tequila"
 - 40. *Euphorbia characias*
 - 41. *Cercidiphyllum japonicum* "pendula"
 - 42. *Photinia nana*
 - 43. *Miscanthus* "morning light"
 - 44. *Nerium oleander*
 - 45. *Rosmarinus officinalis* "prostratum"
 - 46. *Pennisetum alopecuroides* "hameln"
 - 47. *Rudbeckia* "goldsturm"
 - 48. *Viburnum propinquum*
 - 49. *Cornus mas*
 - 50. *Osmanthus armatus*
 - 51. *Helichrysum italicum*
 - 52. *Pennisetum rubrum*
 - 53. *Stipa tenuissima*
 - 54. *Rosa Meiland* "Knock Out"
- CESPUGLI:**
- 14. *Phormium robur*
 - 16. *Loropetalum chinensis* "rubrum Fire Dance"
 - 19. *Lonicera nitida*
 - 24. *Phormium Robur*
 - 28. *Berberis thunbergii* "atropurpurea nana"
 - 29. *Phormium tenax* "variegata"
 - 30. *Raphiolepis indica*
- LE ERBACEE PERENNI:**
- 17. *Hemerocallis fulvia* "arancione"
 - 23. *Miscanthus sinensis* "adagio"
 - 25. *Stipa tenuissima*
 - 26. *Salvia nemerosa*
 - 32. *Erigeron karvinskianus*
 - 36. *Pachissandra terminalis*
 - 40. *Euphorbia characias*
 - 43. *Miscanthus* "morning light"
 - 46. *Pennisetum alopecuroides* "hameln"
 - 47. *Rudbeckia* "goldsturm"
 - 52. *Pennisetum rubrum*
- LE ROSE:**
- 39. *Rosa Meiland* "Tequila"
 - 39. *Rosa Meiland* "Knock Out"

COMUNE DI THIENE

COMITENTE
carrefourproperty CRF
 CARREFOUR PROPERTY ITALIA S.R.L.
 CAROLA THIENE S.R.L.
 CAROLA THIENE S.R.L.

STUDIO IMPATTO AMBIENTALE
 STUDIO IMPATTO AMBIENTALE
 Via M. Lanza, 42 - 20129 Milano (TV)
 Tel. +39 02 715206
 Fax. +39 02 480719
 uff.tecnica@studio-impa.it
 www.studio-impa.com

INGEGNERIA E COORDINAMENTO
milaningeegneria
 Via Trieste 41 - 20129 Milano (TV)
 Tel. +39 02 3078850
 Fax. +39 02 3078850
 C.F. n° 04182220968

ARCHITETTURA
MYGG
 Via Daniele Farina, 12
 20124 Milano (TV)
 Tel. +39 02 45371124
 www.mygg.it
 mygg@mygg.it

IMPANTI
AP
 Via C. Maglioli, 94 - 20128 Milano (TV)
 Tel. +39 02 3342599
 Fax. +39 02 3342599
 mail@apengineering.it

VIABILITÀ
NETMOBILITY
 Via G. Maglioli, 94 - 20128 Milano (TV)
 Tel. +39 02 3342599
 Fax. +39 02 3342599
 www.netmobility.it
 netmobility@netmobility.it
 C.F. n° 04182220968

PROGETTO DEL VERDE
viridis
 41 - 00144 ROMA
 Via Oliva, 41 - 00144 ROMA (RM)
 Tel. +39 06 3791946
 Fax. +39 06 3791946
 www.viridis.it
 info@viridis.it

ACUSTICA
DECIBEL
 Via Ungarelli, 24/C - 20127 Padova
 Tel. +39 049 8201716
 Fax. +39 049 8201716
 www.progettoacustica.it
 P.IVA 02578420237

PROGETTO
RESTYLING E AMPLIAMENTO CENTRO COMMERCIALE CARREFOUR DI THIENE

EMISSIONE
VALUTAZIONE IMPATTO AMBIENTALE (VIA)

TITOLO
TAVOLA BOTANICA PLANIMETRIA DEL VERDE AMPLIAMENTO

ELABORATO N.
AG003

Scala	1:500	Redazione	DF	Approvazione	DF	Job Number	H106
Revisione	00	Data	3.5.2019	Emissione			VIA